



TOURIST ACCOMMODATION AUSTRALIA

EMBARGO: 11:30AM (CANBERRA TIME) FRI 21 JUN 2002

MARCH QTR KEY FIGURES

LICENSED HOTELS	Mar Qtr 2001	Mar Qtr 2002	change
Rooms available (no.)	77 626	78 163	0.7 %
Room nights occupied (no.)	4 386.9	4 391.8	0.1 %
Room occupancy rate (%)	62.9	62.4	-0.5 pts
Takings from accommodation (\$'000)	636 858	607 768	-4.6 %
Takings per room night occupied (\$)	145.2	138.3	-6.9 \$

MOTELS AND GUEST HOUSES

Rooms available (no.)	84 432	84 284	-0.2 %
Room nights occupied (no.)	3 907.2	3 967.8	1.6 %
Room occupancy rate (%)	51.5	52.3	0.8 pts
Takings from accommodation (\$'000)	345 954	354 023	2.3 %
Takings per room night occupied (\$)	88.5	89.2	0.7 \$

SERVICED APARTMENTS

Rooms available (no.)	34 501	35 412	2.6 %
Room nights occupied (no.)	1 894.4	2 070.2	9.3 %
Room occupancy rate (%)	61.1	65.0	3.9 pts
Takings from accommodation (\$'000)	235 295	252 201	7.2 %
Takings per room night occupied (\$)	124.2	121.8	-2.4 \$

MARCH QTR KEY POINTS

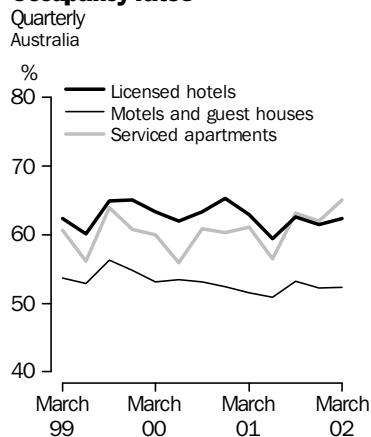
OCCUPANCY AND CAPACITY UP, HOTEL TAKINGS DOWN

- In the March quarter 2002 the number of rooms in hotels, motels, guest houses and serviced apartments increased slightly (0.7%) compared to the March quarter 2001. The number of rooms in serviced apartments and hotels increased by 2.6% and 0.7% respectively, while the number of rooms in motels declined marginally.
- Increases in room nights occupied were recorded for all accommodation types in the March quarter 2002 compared to the March quarter 2001, with serviced apartments recording the biggest increase (9.3%).
- Hotel, motel and serviced apartment combined room occupancy rates were up 0.9 percentage points on the March quarter 2001, reflecting strong growth in room occupancy rates for serviced apartments (up 3.9 percentage points).
- Takings for hotels, motels, guest houses and serviced apartments fell by 0.3% in the March quarter 2002 compared to the March quarter 2001, driven by a fall in hotel takings of 4.6%.

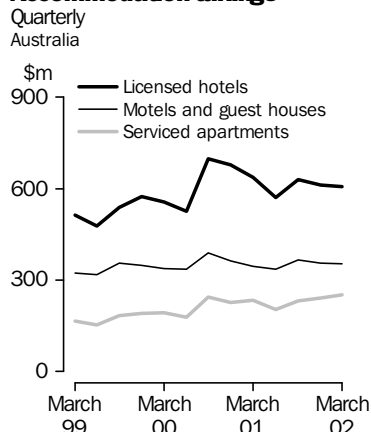
EMPLOYMENT

- Employment in hotels, motels, guest houses and serviced apartments fell 3.2% in the March quarter 2002 compared to the March quarter 2001.

Occupancy rates



Accommodation takings



- For further information about these and related statistics, contact Neil McKellar-Stewart on 07 3222 6364, or the National Information and Referral Service on 1300 135 070.

NOTES

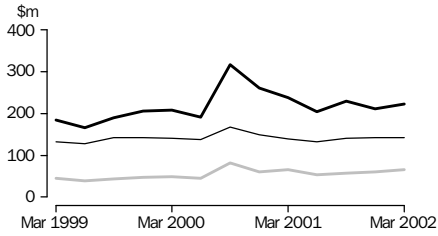
FORTHCOMING ISSUES	<table border="0" style="width: 100%;"> <thead> <tr> <th style="text-align: left; font-weight: normal; font-style: italic;">ISSUE</th> <th style="text-align: right; font-weight: normal; font-style: italic;">RELEASE DATE</th> </tr> </thead> <tbody> <tr> <td>June Quarter 2002</td> <td style="text-align: right;">20 September 2002</td> </tr> <tr> <td>September Quarter 2002</td> <td style="text-align: right;">20 December 2002</td> </tr> </tbody> </table>	ISSUE	RELEASE DATE	June Quarter 2002	20 September 2002	September Quarter 2002	20 December 2002				
ISSUE	RELEASE DATE										
June Quarter 2002	20 September 2002										
September Quarter 2002	20 December 2002										
INTRODUCTION	<p>This publication contains the results of the quarterly Survey of Tourist Accommodation (STA). The STA includes hotels, motels, guest houses and serviced apartments with 15 or more rooms.</p>										
CHANGES IN THIS ISSUE	<p>From March quarter 2002 changes have been made to some Statistical Local Areas and Tourism Regions in Queensland, South Australia and Tasmania. These changes have been made in response to revisions to the <i>Australian Standard Geographical Classification (ASGC)</i> (Cat. no. 1216.0) and requests from State government tourism agencies. Details of these changes are included in paragraph 21 of the Explanatory Notes.</p>										
COVERAGE	<p>Coverage (described in paragraph 9 of the Explanatory Notes) was revised in December 2001. This revision has contributed to changes in establishment counts and to movements in data in the star grading tables (Tables 2-10). Further details of the impact of star grading are found in the Glossary (page 39).</p>										
SYMBOLS AND OTHER USAGES	<table border="0" style="width: 100%;"> <tr> <td style="padding-right: 20px;">n.a.</td> <td>not available</td> </tr> <tr> <td>n.p.</td> <td>not available for publication but included in totals where applicable</td> </tr> <tr> <td>r</td> <td>revised</td> </tr> <tr> <td>..</td> <td>not applicable</td> </tr> <tr> <td>—</td> <td>nil or rounded to zero</td> </tr> </table>	n.a.	not available	n.p.	not available for publication but included in totals where applicable	r	revised	..	not applicable	—	nil or rounded to zero
n.a.	not available										
n.p.	not available for publication but included in totals where applicable										
r	revised										
..	not applicable										
—	nil or rounded to zero										

Dennis Trewin
Australian Statistician

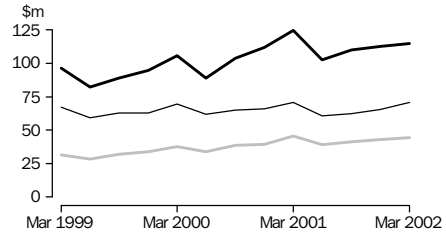
ACCOMMODATION TAKINGS

Licensed hotels
 Motels and guest houses
 Serviced apartments

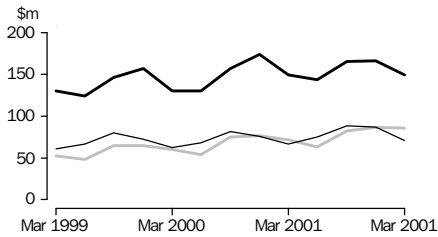
NEW SOUTH WALES



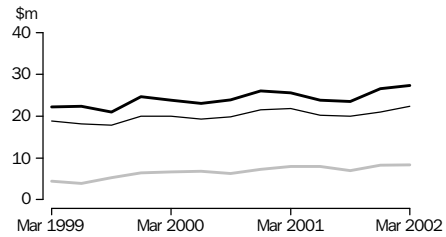
VICTORIA



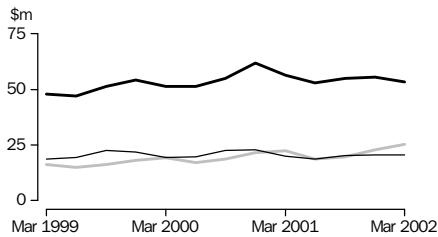
QUEENSLAND



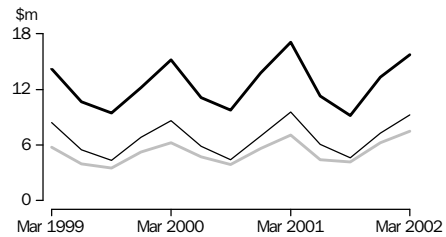
SOUTH AUSTRALIA



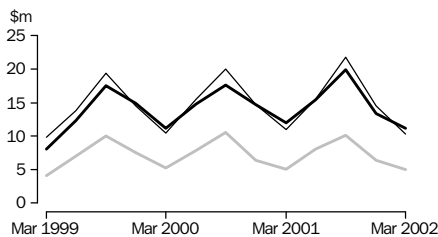
WESTERN AUSTRALIA



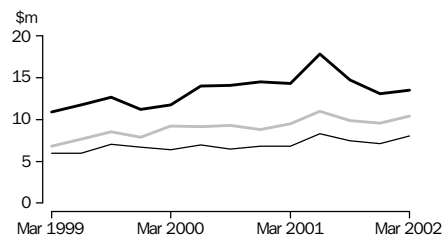
TASMANIA



NORTHERN TERRITORY



AUSTRALIAN CAPITAL TERRITORY



LIST OF TABLES

Page

1	Summary of hotels, motels, guest houses and serviced apartments	5
	Hotels, motels, guest houses and serviced apartments, by star grading	
2	Australia	6
3	New South Wales	8
4	Victoria	10
5	Queensland	12
6	South Australia	14
7	Western Australia	16
8	Tasmania	18
9	Northern Territory	20
10	Australian Capital Territory	22
	Hotels, motels, guest houses and serviced apartments, by Tourism Region	
11	New South Wales	24
12	Victoria	26
13	Queensland	28
14	South Australia	30
15	Western Australia	31
16	Tasmania	32
17	Northern Territory and Australian Capital Territory	33

1

SUMMARY OF HOTELS, MOTELS, GUEST HOUSES AND SERVICED APARTMENTS (a)—Australia

<i>Period</i>	<i>Establish- ments no.</i>	<i>Guest rooms no.</i>	<i>Bed spaces no.</i>	<i>Persons employed no.</i>	<i>Room nights occupied '000</i>	<i>Room occupancy rate %</i>	<i>Guest nights '000</i>	<i>Bed occupancy rate %</i>	<i>Guest arrivals '000</i>	<i>Average length of stay days</i>	<i>Takings from accom- modation \$'000</i>
LICENSED HOTELS WITH FACILITIES											
2000											
December quarter	780	76 783	204 109	73 457	4 607	65.3	7 569	40.3	3 109	2.4	677 488
2001											
March quarter	781	77 626	205 020	72 670	4 387	62.9	7 294	39.6	3 034	2.4	636 858
June quarter	778	78 050	205 656	72 226	4 212	59.3	6 854	36.6	2 984	2.3	569 936
September quarter	776	78 241	205 546	71 620	4 506	62.6	7 509	39.7	3 175	2.4	628 608
December quarter	781	78 574	206 592	70 663	4 437	61.5	7 426	39.1	3 139	2.4	611 507
2002											
March quarter	781	78 163	203 474	69 888	4 390	62.4	7 355	40.2	3 094	2.4	607 768
Year ended March 2001	17 617	63.4	28 793	39.0	12 044	2.4	2 539 127
Year ended March 2002	17 546	61.5	29 143	38.9	12 393	2.4	2 417 819
MOTELS AND GUEST HOUSES WITH FACILITIES											
2000											
December quarter	2 402	84 722	250 170	30 328	4 083	52.4	7 167	31.2	3 955	1.8	363 272
2001											
March quarter	2 400	84 432	248 795	29 917	3 907	51.5	6 982	31.2	3 856	1.8	345 954
June quarter	2 398	84 093	247 928	29 368	3 894	50.9	6 746	29.9	3 788	1.8	336 607
September quarter	2 394	84 021	246 834	29 740	4 113	53.2	7 313	32.2	4 076	1.8	365 585
December quarter	2 400	84 430	247 776	29 288	4 055	52.2	7 187	31.6	4 079	1.8	355 294
2002											
March quarter	2 401	84 284	246 608	29 123	3 968	52.3	7 158	32.3	3 942	1.8	354 023
Year ended March 2001	16 309	52.6	28 649	31.3	15 768	1.8	1 432 585
Year ended March 2002	16 029	52.2	28 404	31.5	15 885	1.8	1 411 510
SERVICED APARTMENTS											
2000											
December quarter	646	33 421	113 267	11 612	1 853	60.3	4 040	38.8	1 143	3.5	226 330
2001											
March quarter	649	34 501	115 146	11 872	1 894	61.1	4 183	40.4	1 142	3.7	235 295
June quarter	649	34 401	114 636	11 532	1 767	56.4	3 752	36.0	1 071	3.5	204 794
September quarter	646	34 467	114 391	11 459	2 000	63.1	4 361	41.4	1 175	3.7	232 329
December quarter	657	35 129	117 192	11 799	2 003	62.0	4 498	41.7	1 225	3.7	242 753
2002											
March quarter	668	35 412	117 872	11 808	2 070	65.0	4 659	44.0	1 248	3.7	252 201
Year ended March 2001	7 254	59.6	15 751	38.3	4 252	3.7	883 077
Year ended March 2002	7 841	61.7	17 270	40.8	4 719	3.7	932 076
TOTAL ESTABLISHMENTS											
2000											
December quarter	3 828	194 926	567 546	115 397	10 543	58.8	18 775	36.0	8 207	2.3	1 267 090
2001											
March quarter	3 830	196 559	568 961	114 459	10 189	57.7	18 459	36.1	8 031	2.3	1 218 107
June quarter	3 825	196 544	568 220	113 126	9 873	55.2	17 352	33.6	7 843	2.2	1 111 337
September quarter	3 816	196 729	566 771	112 819	10 619	58.7	19 182	36.8	8 427	2.3	1 226 522
December quarter	3 838	198 133	571 560	111 750	10 496	57.6	19 111	36.4	8 444	2.3	1 209 554
2002											
March quarter	3 850	197 859	567 954	110 819	10 428	58.6	19 171	37.5	8 283	2.3	1 213 991
Year ended March 2001	41 180	58.0	73 193	35.4	32 064	2.3	4 854 789
Year ended March 2002	41 416	57.5	74 816	36.1	32 997	2.3	4 761 405

(a) Comprising establishments with 15 or more rooms or units. See Explanatory Notes, paragraph 7.

STAR GRADING

Period	Licensed	Motels	Serviced	STAR GRADING					Ungraded	Total
	hotels with facilities	and guest houses	apartments	1	2	3	4	5		
ESTABLISHMENTS, CAPACITY AND EMPLOYMENT (number)										
March quarter 2001										
Establishments	781	2 400	649	63	462	1 862	892	98	453	3 830
Guest rooms	77 626	84 432	34 501	2 040	13 420	70 568	70 314	23 463	16 754	196 559
Bed spaces	205 020	248 795	115 146	6 510	39 562	209 390	204 756	60 776	47 967	568 961
Persons employed	72 670	29 917	11 872	727	5 301	27 345	39 383	35 252	6 451	114 459
March quarter 2002										
Establishments	781	2 401	668	65	459	1 863	947	105	411	3 850
Guest rooms	78 163	84 284	35 412	2 287	13 582	70 614	72 967	24 412	13 997	197 859
Bed spaces	203 474	246 608	117 872	7 145	39 866	208 136	209 171	62 678	40 958	567 954
Persons employed	69 888	29 123	11 808	768	5 283	26 169	38 395	34 438	5 766	110 819
ROOM NIGHTS OCCUPIED ('000)										
2001										
March quarter	4 386.9	3 907.2	1 894.4	62.9	497.2	3 434.6	4 076.3	1 471.8	645.7	10 188.6
2002										
January	1 410.6	1 330.4	736.8	25.6	182.8	1 171.9	1 393.2	499.0	205.3	3 477.8
February	1 427.0	1 203.0	627.0	23.5	153.6	1 043.8	1 356.6	497.1	182.4	3 257.0
March	1 552.7	1 434.5	706.4	28.2	187.3	1 241.9	1 513.0	518.4	204.8	3 693.6
March quarter	4 390.4	3 967.8	2 070.2	77.3	523.7	3 457.6	4 262.8	1 514.6	592.5	10 428.4
ROOM OCCUPANCY RATES (%)										
2001										
March quarter	62.9	51.5	61.1	34.3	41.2	54.1	64.5	69.7	43.0	57.7
2002										
January	58.3	50.9	67.1	36.1	43.4	53.5	61.6	65.9	47.3	56.7
February	65.2	51.0	63.3	36.7	40.4	52.8	66.4	72.7	46.5	58.8
March	64.1	54.9	64.4	39.8	44.5	56.8	66.9	68.5	47.2	60.2
March quarter	62.4	52.3	65.0	37.5	42.8	54.4	64.9	68.9	47.0	58.6
GUEST NIGHTS ('000)										
2001										
March quarter	7 294.3	6 981.8	4 182.5	99.9	901.9	6 466.0	7 331.6	2 477.7	1 181.4	18 458.6
2002										
January	2 574.3	2 622.5	1 840.6	42.6	362.6	2 415.5	2 861.7	935.3	419.6	7 037.4
February	2 250.4	2 009.6	1 291.8	37.2	262.9	1 832.8	2 305.1	788.6	325.3	5 551.8
March	2 529.9	2 525.9	1 526.3	44.9	338.9	2 281.8	2 672.4	858.2	385.8	6 582.1
March quarter	7 354.6	7 158.0	4 658.8	124.7	964.5	6 530.1	7 839.2	2 582.2	1 130.8	19 171.4
BED OCCUPANCY RATES (%)										
2001										
March quarter	39.6	31.2	40.4	17.1	25.3	34.3	39.8	45.3	27.5	36.1
2002										
January	40.8	34.3	50.4	19.3	29.3	37.4	44.2	48.1	33.1	40.0
February	39.5	29.1	39.2	18.6	23.6	31.5	39.4	44.9	28.4	34.9
March	40.1	33.0	41.9	20.3	27.4	35.4	41.2	44.2	30.4	37.4
March quarter	40.2	32.3	44.0	19.4	26.9	34.9	41.7	45.8	30.7	37.5

(a) Comprising establishments with 15 or more rooms or units. See Explanatory Notes, paragraph 7.

STAR GRADING

Period	Licensed hotels with facilities	Motels and guest houses	Serviced apartments	1	2	3	4	5	Ungraded	Total
GUEST ARRIVALS ('000)										
2001										
March quarter	3 034.1	3 855.6	1 141.6	56.4	514.5	3 205.5	2 905.5	899.4	450.0	8 031.3
2002										
January	1 014.3	1 414.1	450.8	25.5	197.6	1 166.0	1 024.1	319.6	146.6	2 879.3
February	985.4	1 127.4	366.8	22.4	148.0	925.1	946.3	315.1	122.7	2 479.7
March	1 094.2	1 400.2	430.0	26.5	188.5	1 147.6	1 081.1	334.3	146.4	2 924.3
March quarter	3 093.9	3 941.7	1 247.6	74.4	534.0	3 238.6	3 051.4	969.0	415.8	8 283.3
AVERAGE LENGTH OF STAY (days)										
2001										
March quarter	2.4	1.8	3.7	1.8	1.8	2.0	2.5	2.8	2.6	2.3
2002										
March quarter	2.4	1.8	3.7	1.7	1.8	2.0	2.6	2.7	2.7	2.3
TAKINGS FROM ACCOMMODATION (\$'000)										
2001										
March quarter	636 858	345 954	235 295	3 935	32 319	302 832	521 509	296 157	61 356	1 218 107
2002										
January	195 340	121 522	95 974	1 560	12 710	107 244	176 475	94 846	20 000	412 836
February	195 217	105 369	72 285	1 392	9 629	89 444	164 845	91 097	16 465	372 871
March	217 211	127 132	83 941	1 681	12 332	108 560	187 297	99 686	18 730	428 285
March quarter	607 768	354 023	252 201	4 632	34 671	305 248	528 616	285 629	55 195	1 213 991
AVERAGE TAKINGS PER ROOM NIGHT OCCUPIED (\$)										
2001										
March quarter	145.2	88.5	124.2	62.5	65.0	88.2	127.9	201.2	95.0	119.6
2002										
January	138.5	91.3	130.3	60.9	69.5	91.5	126.7	190.1	97.4	118.7
February	136.8	87.6	115.3	59.2	62.7	85.7	121.5	183.3	90.3	114.5
March	139.9	88.6	118.8	59.6	65.8	87.4	123.8	192.3	91.5	116.0
March quarter	138.4	89.2	121.8	60.0	66.2	88.3	124.0	188.6	93.2	116.4
AVERAGE TAKINGS PER AVAILABLE ROOM NIGHT (\$)										
2001										
March quarter	91.3	45.6	75.9	21.4	26.8	47.7	82.5	140.2	40.9	68.9
2002										
January	80.7	46.5	87.4	22.0	30.2	49.0	78.1	125.3	46.1	67.3
February	89.2	44.6	73.0	21.7	25.3	45.3	80.7	133.3	42.0	67.3
March	89.6	48.7	76.6	23.7	29.3	49.6	82.8	131.7	43.2	69.8
March quarter	86.4	46.7	79.2	22.5	28.4	48.0	80.5	130.0	43.8	68.2

(a) Comprising establishments with 15 or more rooms or units. See Explanatory Notes, paragraph 7.

STAR GRADING

Period	Licensed	Motels	Serviced	STAR GRADING					Ungraded	Total
	hotels with facilities	and guest houses	apartments	1	2	3	4	5		
ESTABLISHMENTS, CAPACITY AND EMPLOYMENT (number)										
March quarter 2001										
Establishments	198	993	137	31	178	703	219	26	171	1 328
Guest rooms	25 039	32 810	7 792	1 199	5 108	25 457	20 835	6 912	6 130	65 641
Bed spaces	61 760	97 578	25 479	4 270	15 079	74 420	57 224	15 818	18 006	184 817
Persons employed	21 659	11 514	2 979	281	1 723	9 487	12 783	10 048	1 830	36 152
March quarter 2002										
Establishments	198	992	134	33	182	700	231	26	152	1 324
Guest rooms	24 498	32 858	7 550	1 272	5 352	25 589	21 013	6 888	4 792	64 906
Bed spaces	59 027	96 612	23 868	4 453	15 482	73 978	56 341	14 940	14 313	179 507
Persons employed	19 872	11 185	2 715	321	1 802	8 657	11 795	9 509	1 688	33 772
ROOM NIGHTS OCCUPIED ('000)										
2001										
March quarter	1 472.8	1 519.0	429.3	36.3	211.6	1 266.3	1 275.4	423.5	208.1	3 421.1
2002										
January	449.0	529.8	157.5	12.5	78.9	431.8	420.7	132.6	59.8	1 136.3
February	492.8	460.3	139.9	12.0	64.0	387.5	427.6	148.1	53.8	1 093.0
March	520.1	554.3	155.6	14.1	78.8	461.7	462.3	152.2	61.0	1 230.1
March quarter	1 461.9	1 544.4	453.1	38.7	221.8	1 281.0	1 310.5	432.9	174.6	3 459.4
ROOM OCCUPANCY RATES (%)										
2001										
March quarter	65.4	51.5	61.2	33.6	46.0	55.3	68.0	68.1	37.9	57.9
2002										
January	59.1	52.0	67.3	31.7	47.6	54.4	64.6	62.1	40.3	56.5
February	71.8	50.0	66.2	33.7	42.7	54.1	64.6	76.8	40.1	60.1
March	68.5	54.4	66.5	35.8	47.5	58.2	71.0	71.3	41.1	61.1
March quarter	66.3	52.2	66.7	33.8	46.0	55.6	69.3	69.8	40.5	59.2
GUEST NIGHTS ('000)										
2001										
March quarter	2 383.4	2 734.5	873.5	57.2	389.2	2 379.8	2 140.5	672.8	351.9	5 991.4
2002										
January	786.3	1 056.0	367.2	21.8	154.6	874.2	808.7	234.6	115.5	2 209.5
February	775.9	770.2	271.7	19.2	110.1	665.8	697.1	234.3	91.4	1 817.8
March	838.5	985.0	318.0	23.5	144.8	835.5	784.7	244.4	108.7	2 141.5
March quarter	2 400.7	2 811.2	956.9	64.5	409.5	2 375.4	2 290.6	713.3	315.5	6 168.8
BED OCCUPANCY RATES (%)										
2001										
March quarter	42.9	31.2	38.1	14.9	28.7	35.5	41.6	47.3	21.8	36.0
2002										
January	43.0	35.3	49.6	15.8	32.2	38.1	46.3	50.7	26.0	39.7
February	46.9	28.5	40.7	15.4	25.4	32.1	44.2	56.0	22.8	36.2
March	45.8	32.9	43.0	17.0	30.2	36.4	44.9	52.8	24.5	38.5
March quarter	45.2	32.3	44.5	16.1	29.4	35.7	45.2	53.1	24.5	38.2

(a) Comprising establishments with 15 or more rooms or units. See Explanatory Notes, paragraph 7.

STAR GRADING

Period	Licensed hotels with facilities	Motels and guest houses	Serviced apartments	1	2	3	4	5	Ungraded	Total
GUEST ARRIVALS ('000)										
2001										
March quarter	958.4	1 619.3	260.6	32.7	227.5	1 256.2	899.0	268.7	154.2	2 838.3
2002										
January	301.5	617.2	105.7	12.0	92.4	464.2	320.3	89.4	46.3	1 024.5
February	317.6	469.2	87.2	11.0	66.6	364.1	294.3	98.5	39.6	874.0
March	344.4	591.3	103.4	12.6	84.0	456.8	335.4	103.2	47.2	1 039.1
March quarter	963.5	1 677.8	296.3	35.6	243.0	1 285.1	949.9	291.0	133.1	2 937.6
AVERAGE LENGTH OF STAY (days)										
2001										
March quarter	2.5	1.7	3.4	1.8	1.7	1.9	2.4	2.5	2.3	2.1
2002										
March quarter	2.5	1.7	3.2	1.8	1.7	1.8	2.4	2.5	2.4	2.1
TAKINGS FROM ACCOMMODATION (\$'000)										
2001										
March quarter	237 512	138 790	65 569	2 501	14 274	117 986	182 562	105 690	18 857	441 871
2002										
January	67 539	50 448	23 707	840	5 526	40 983	58 817	29 950	5 578	141 693
February	75 411	41 322	19 528	764	4 065	34 669	58 065	33 777	4 920	136 260
March	78 890	50 268	22 183	900	5 239	41 610	63 186	34 685	5 720	151 341
March quarter	221 839	142 038	65 417	2 505	14 830	117 262	180 068	98 411	16 218	429 294
AVERAGE TAKINGS PER ROOM NIGHT OCCUPIED (\$)										
2001										
March quarter	161.3	91.4	152.7	69.0	67.5	93.2	143.1	249.6	90.6	129.2
2002										
January	150.4	95.2	150.5	67.2	70.0	94.9	139.8	225.9	93.2	124.7
February	153.0	89.8	139.5	63.6	63.5	89.5	135.8	228.0	91.5	124.7
March	151.7	90.7	142.5	63.7	66.5	90.1	136.7	228.0	93.8	123.0
March quarter	151.7	92.0	144.4	64.8	66.9	91.5	137.4	227.3	92.9	124.1
AVERAGE TAKINGS PER AVAILABLE ROOM NIGHT (\$)										
2001										
March quarter	105.4	47.0	93.5	23.2	31.1	51.5	97.4	169.9	34.3	74.8
2002										
January	88.9	49.5	101.3	21.3	33.3	51.7	90.3	140.3	37.5	70.4
February	109.9	44.9	92.4	21.5	27.1	48.4	98.7	175.1	36.7	75.0
March	103.9	49.4	94.8	22.8	31.6	52.5	97.0	162.4	38.5	75.2
March quarter	100.6	48.0	96.3	21.9	30.8	50.9	95.2	158.7	37.6	73.5

(a) Comprising establishments with 15 or more rooms or units. See Explanatory Notes, paragraph 7.

4

HOTELS, MOTELS, GUEST HOUSES AND SERVICED APARTMENTS (a)—Vic.

STAR GRADING

<i>Period</i>	<i>Licensed hotels with facilities</i>	<i>Motels and guest houses</i>	<i>Serviced apartments</i>	1	2	3	4	5	<i>Ungraded</i>	<i>Total</i>
ESTABLISHMENTS, CAPACITY AND EMPLOYMENT (number)										
March quarter 2001										
Establishments	127	497	82	8	69	369	198	17	45	706
Guest rooms	11 797	15 599	4 627	259	1 786	11 567	12 886	3 838	1 687	32 023
Bed spaces	28 178	45 180	13 827	742	5 456	33 032	34 407	8 472	5 076	87 185
Persons employed	14 444	5 714	1 732	72	709	4 231	7 123	8 969	786	21 890
March quarter 2002										
Establishments	130	497	84	8	67	372	204	20	40	711
Guest rooms	12 443	15 506	4 656	314	1 768	11 737	13 000	4 171	1 615	32 605
Bed spaces	29 559	45 014	14 299	911	5 454	33 297	35 103	9 288	4 819	88 872
Persons employed	13 929	5 460	1 710	90	712	4 143	6 383	8 895	876	21 099
ROOM NIGHTS OCCUPIED ('000)										
2001										
<i>March quarter</i>	744.6	743.7	298.9	10.0	60.2	563.7	797.3	269.4	86.6	1 787.2
2002										
January	231.5	246.3	103.4	5.5	20.9	194.2	247.9	87.3	25.4	581.2
February	237.6	224.1	91.7	4.7	16.2	169.1	248.2	89.5	25.7	553.5
March	265.5	274.8	102.1	6.1	23.2	208.8	279.8	95.5	28.9	642.4
<i>March quarter</i>	734.6	745.2	297.3	16.4	60.3	572.2	775.9	272.3	80.0	1 777.1
ROOM OCCUPANCY RATES (%)										
2001										
<i>March quarter</i>	70.3	53.0	72.3	42.7	37.4	54.2	68.9	78.0	58.0	62.1
2002										
January	60.0	51.2	71.7	56.9	38.1	53.4	61.5	67.5	50.7	57.5
February	68.2	51.6	70.4	53.8	32.8	51.5	68.2	76.6	56.8	60.6
March	68.8	57.2	70.8	62.7	42.3	57.4	69.4	73.9	57.8	63.6
<i>March quarter</i>	65.6	53.4	70.9	57.9	37.9	54.2	66.3	72.5	55.1	60.6
GUEST NIGHTS ('000)										
2001										
<i>March quarter</i>	1 146.1	1 340.3	568.1	13.1	114.5	1 048.3	1 328.4	393.0	157.3	3 054.5
2002										
January	381.0	484.2	228.8	8.4	43.0	385.4	471.4	134.9	50.9	1 094.0
February	351.3	379.7	168.0	7.3	29.7	293.4	395.2	127.2	46.3	899.0
March	402.9	488.5	195.4	9.2	44.4	376.1	462.4	140.5	54.3	1 086.8
<i>March quarter</i>	1 135.2	1 352.3	592.2	24.8	117.0	1 054.8	1 329.0	402.5	151.5	3 079.7
BED OCCUPANCY RATES (%)										
2001										
<i>March quarter</i>	45.3	33.0	46.1	19.7	23.3	35.3	43.0	51.5	35.0	39.0
2002										
January	41.6	34.7	51.6	29.8	25.4	37.3	43.3	46.8	34.1	39.7
February	42.4	30.1	42.0	28.5	19.4	31.5	40.2	48.9	34.3	36.1
March	44.0	35.0	44.1	32.5	26.2	36.4	42.5	48.8	36.3	39.4
<i>March quarter</i>	42.7	33.4	46.0	30.3	23.8	35.2	42.1	48.2	34.9	38.5

(a) Comprising establishments with 15 or more rooms or units. See Explanatory Notes, paragraph 7.

4

HOTELS, MOTELS, GUEST HOUSES AND SERVICED APARTMENTS (a)—Vic. *continued*

STAR GRADING

Period	Licensed hotels with facilities	Motels and guest houses	Serviced apartments	1	2	3	4	5	Ungraded	Total
GUEST ARRIVALS ('000)										
2001										
March quarter	515.9	748.8	164.4	7.7	66.7	533.6	608.7	156.3	56.1	1 429.1
2002										
January	168.0	268.7	61.2	7.3	25.9	191.1	199.8	56.4	17.3	497.9
February	171.5	222.9	54.2	6.6	18.6	156.7	188.5	60.5	17.7	448.6
March	185.1	280.1	57.4	7.8	27.3	195.3	212.2	59.7	20.3	522.6
March quarter	524.6	771.7	172.8	21.7	71.8	543.1	600.5	176.7	55.4	1 469.1
AVERAGE LENGTH OF STAY (days)										
2001										
March quarter	2.2	1.8	3.5	1.7	1.7	2.0	2.2	2.5	2.8	2.1
2002										
March quarter	2.2	1.8	3.4	1.1	1.6	1.9	2.2	2.3	2.7	2.1
TAKINGS FROM ACCOMMODATION (\$'000)										
2001										
March quarter	124 811	70 945	45 646	611	3 914	50 431	110 561	63 137	12 746	241 401
2002										
January	34 488	23 635	15 475	321	1 461	18 050	32 271	17 976	3 519	73 598
February	37 058	20 971	13 314	271	1 043	14 792	32 690	18 978	3 569	71 343
March	43 322	26 233	15 618	349	1 597	18 866	38 990	21 401	3 970	85 172
March quarter	114 868	70 839	44 407	941	4 101	51 708	103 951	58 356	11 058	230 113
AVERAGE TAKINGS PER ROOM NIGHT OCCUPIED (\$)										
2001										
March quarter	167.6	95.4	152.7	61.3	65.1	89.5	138.7	234.3	147.2	135.1
2002										
January	149.0	96.0	149.6	57.9	69.9	93.0	130.2	205.9	138.6	126.6
February	156.0	93.6	145.2	57.4	64.2	87.5	131.7	212.1	138.9	128.9
March	163.2	95.5	152.9	57.2	68.9	90.3	139.3	224.0	137.2	132.6
March quarter	156.4	95.1	149.4	57.5	68.0	90.4	134.0	214.3	138.2	129.5
AVERAGE TAKINGS PER AVAILABLE ROOM NIGHT (\$)										
2001										
March quarter	117.8	50.6	110.5	26.2	24.4	48.5	95.6	182.8	85.3	83.9
2002										
January	89.4	49.2	107.2	32.9	26.7	49.6	80.1	139.0	70.3	72.8
February	106.4	48.3	102.1	30.9	21.1	45.0	89.8	162.5	78.9	78.1
March	112.3	54.6	108.2	35.8	29.1	51.9	96.7	165.5	79.3	84.3
March quarter	102.6	50.8	106.0	33.3	25.8	49.0	88.8	155.5	76.1	78.4

(a) Comprising establishments with 15 or more rooms or units. See Explanatory Notes, paragraph 7.

STAR GRADING

<i>Period</i>	<i>Licensed hotels with facilities</i>	<i>Motels and guest houses</i>	<i>Serviced apartments</i>	1	2	3	4	5	<i>Ungraded</i>	<i>Total</i>
ESTABLISHMENTS, CAPACITY AND EMPLOYMENT (number)										
March quarter 2001										
Establishments	170	515	272	9	99	414	293	32	110	957
Guest rooms	20 589	18 459	13 475	209	2 476	15 268	21 935	8 068	4 567	52 523
Bed spaces	63 000	54 711	46 302	561	7 568	48 606	68 883	25 093	13 302	164 013
Persons employed	20 097	6 257	4 071	88	1 153	5 715	10 281	11 490	1 698	30 425
March quarter 2002										
Establishments	170	517	288	9	97	417	320	37	95	975
Guest rooms	20 892	18 479	14 060	282	2 629	15 131	23 242	8 649	3 498	53 431
Bed spaces	62 886	54 106	48 391	760	8 099	47 707	71 553	26 555	10 709	165 383
Persons employed	20 033	6 347	4 156	89	1 101	5 697	10 749	11 587	1 313	30 536
ROOM NIGHTS OCCUPIED ('000)										
2001										
<i>March quarter</i>	1 105.0	839.3	691.0	6.8	87.3	713.3	1 151.0	489.8	187.1	2 635.3
2002										
January	397.6	292.1	301.8	4.3	38.3	256.0	439.5	185.2	68.3	991.5
February	347.6	269.6	241.4	3.6	32.5	213.3	390.2	162.8	56.1	858.5
March	379.9	307.0	269.1	4.2	35.4	248.0	441.7	166.5	60.3	956.0
<i>March quarter</i>	1 125.1	868.7	812.3	12.0	106.3	717.3	1 271.3	514.5	184.7	2 806.1
ROOM OCCUPANCY RATES (%)										
2001										
<i>March quarter</i>	59.8	50.8	57.0	36.1	39.4	52.1	58.5	67.5	45.7	55.9
2002										
January	61.4	51.0	69.3	48.9	47.0	54.6	61.0	69.1	63.1	59.9
February	59.4	52.1	61.5	45.4	44.2	50.4	60.0	67.2	57.3	57.4
March	58.7	53.6	62.0	47.5	43.4	53.0	61.4	62.1	55.6	57.8
<i>March quarter</i>	59.8	52.2	64.4	47.3	44.9	52.7	60.8	66.1	58.7	58.4
GUEST NIGHTS ('000)										
2001										
<i>March quarter</i>	2 091.3	1 478.3	1 735.1	15.6	157.9	1 400.7	2 394.2	950.7	385.6	5 304.7
2002										
January	842.3	573.7	819.8	7.4	77.6	569.4	1 025.1	400.3	155.9	2 235.8
February	599.7	449.3	547.1	6.4	58.1	395.4	746.3	279.5	110.4	1 596.1
March	695.9	535.8	635.7	6.9	65.8	481.5	876.2	309.5	127.5	1 867.4
<i>March quarter</i>	2 137.9	1 558.8	2 002.6	20.6	201.5	1 446.4	2 647.6	989.3	393.8	5 699.3
BED OCCUPANCY RATES (%)										
2001										
<i>March quarter</i>	37.0	30.1	41.6	30.9	23.2	32.2	38.7	42.1	32.3	36.0
2002										
January	43.2	34.2	54.7	31.2	30.9	38.5	46.2	48.6	47.0	43.6
February	34.1	29.7	40.6	29.9	25.6	29.7	37.3	37.6	36.8	34.5
March	35.7	31.9	42.6	29.5	26.2	32.6	39.6	37.6	38.4	36.5
<i>March quarter</i>	37.8	32.0	46.1	30.2	27.6	33.7	41.2	41.4	40.9	38.3

(a) Comprising establishments with 15 or more rooms or units. See Explanatory Notes, paragraph 7.

5

HOTELS, MOTELS, GUEST HOUSES AND SERVICED APARTMENTS (a)—Qld *continued*

STAR GRADING

Period	Licensed hotels with facilities	Motels and guest houses	Serviced apartments	1	2	3	4	5	Ungraded	Total
GUEST ARRIVALS ('000)										
2001										
March quarter	730.7	732.8	385.5	7.3	92.1	571.6	753.9	297.2	126.9	1 849.0
2002										
January	266.8	269.5	166.3	3.0	35.0	225.2	277.6	118.8	43.2	702.7
February	229.7	218.4	128.5	2.5	27.2	164.4	250.0	99.9	32.5	576.6
March	263.8	259.4	152.2	2.9	31.8	202.1	288.8	109.8	40.0	675.4
March quarter	760.4	747.2	447.0	8.3	94.1	591.7	816.4	328.5	115.6	1 954.6
AVERAGE LENGTH OF STAY (days)										
2001										
March quarter	2.9	2.0	4.5	2.1	1.7	2.5	3.2	3.2	3.0	2.9
2002										
March quarter	2.8	2.1	4.5	2.5	2.1	2.4	3.2	3.0	3.4	2.9
TAKINGS FROM ACCOMMODATION (\$'000)										
2001										
March quarter	149 318	66 911	72 086	345	5 391	58 196	123 270	83 337	17 777	288 315
2002										
January	56 133	24 241	36 361	237	2 689	22 372	51 438	33 109	6 891	116 735
February	43 029	21 618	22 912	199	1 995	16 432	40 235	24 048	4 650	87 559
March	50 368	24 786	26 598	223	2 258	19 897	46 633	27 631	5 110	101 752
March quarter	149 530	70 646	85 871	658	6 942	58 701	138 306	84 787	16 652	306 046
AVERAGE TAKINGS PER ROOM NIGHT OCCUPIED (\$)										
2001										
March quarter	135.1	79.7	104.3	50.7	61.7	81.6	107.1	170.1	95.0	109.4
2002										
January	141.2	83.0	120.5	55.4	70.1	87.4	117.0	178.8	101.0	117.7
February	123.8	80.2	94.9	55.5	61.3	77.0	103.1	147.7	82.8	102.0
March	132.6	80.7	98.8	53.6	63.8	80.2	105.6	165.9	84.8	106.4
March quarter	132.9	81.3	105.7	54.8	65.3	81.8	108.8	164.8	90.2	109.1
AVERAGE TAKINGS PER AVAILABLE ROOM NIGHT (\$)										
2001										
March quarter	80.9	40.5	59.4	18.3	24.3	42.5	62.6	114.8	43.4	61.2
2002										
January	86.7	42.3	83.4	27.1	33.0	47.7	71.4	123.5	63.7	70.5
February	73.6	41.8	58.4	25.2	27.1	38.8	61.9	99.3	47.5	58.6
March	77.8	43.3	61.3	25.5	27.7	42.5	64.8	103.1	47.1	61.5
March quarter	79.5	42.5	68.0	25.9	29.3	43.1	66.2	108.9	52.9	63.7

(a) Comprising establishments with 15 or more rooms or units. See Explanatory Notes, paragraph 7.

STAR GRADING

Period	Licensed hotels with facilities	Motels and guest houses	Serviced apartments	1	2	3	4	5	Ungraded	Total
ESTABLISHMENTS, CAPACITY AND EMPLOYMENT (number)										
March quarter 2001										
Establishments	62	146	27	7	51	116	47	4	10	235
Guest rooms	3 905	5 217	1 280	160	1 497	4 256	2 946	1 263	280	10 402
Bed spaces	9 727	15 666	4 485	387	4 154	12 561	9 411	2 572	793	29 878
Persons employed	4 045	2 018	480	163	764	2 251	1 923	1 300	142	6 543
March quarter 2002										
Establishments	62	145	27	6	51	113	50	4	10	234
Guest rooms	4 091	5 196	1 293	137	1 490	4 133	3 317	1 263	240	10 580
Bed spaces	9 971	15 433	4 480	328	4 151	12 236	10 005	2 499	665	29 884
Persons employed	4 060	2 018	470	131	771	2 174	2 054	1 255	163	6 548
ROOM NIGHTS OCCUPIED ('000)										
2001										
March quarter	210.4	259.4	77.3	3.3	53.2	217.3	174.1	86.6	12.5	547.1
2002										
January	68.6	84.3	26.5	0.9	18.4	70.9	58.9	27.2	3.1	179.4
February	74.1	77.4	25.0	0.8	15.9	65.2	61.2	30.6	2.7	176.4
March	83.4	98.4	30.6	0.8	20.3	80.9	73.9	33.0	3.4	212.4
March quarter	226.0	260.1	82.1	2.6	54.6	217.0	194.0	90.8	9.2	568.2
ROOM OCCUPANCY RATES (%)										
2001										
March quarter	59.9	55.2	67.1	23.2	39.5	56.7	65.7	76.2	49.7	58.4
2002										
January	54.7	52.3	66.2	21.9	39.9	55.3	58.0	69.6	41.6	54.9
February	64.7	53.2	68.9	20.8	38.2	56.3	65.9	86.5	39.9	59.5
March	65.7	61.1	76.3	19.5	44.0	63.2	71.9	84.3	45.7	64.8
March quarter	61.6	55.6	70.5	20.7	40.7	58.3	65.3	79.9	42.4	59.8
GUEST NIGHTS ('000)										
2001										
March quarter	320.6	453.1	156.7	4.9	91.8	387.3	301.8	118.2	26.5	930.4
2002										
January	113.5	162.9	62.6	1.6	33.6	142.0	116.0	39.1	6.8	339.0
February	103.7	125.3	45.8	1.1	26.4	107.7	94.6	40.3	4.8	274.9
March	123.2	168.3	61.9	1.3	34.4	143.7	122.6	45.0	6.5	353.4
March quarter	340.4	456.5	170.3	4.0	94.4	393.3	333.1	124.3	18.1	967.2
BED OCCUPANCY RATES (%)										
2001										
March quarter	36.6	32.1	38.8	14.0	24.6	34.3	35.6	51.1	37.1	34.6
2002										
January	37.3	34.0	45.1	15.7	26.1	37.4	38.0	50.4	33.0	36.8
February	37.1	29.0	36.5	12.2	22.7	31.4	33.8	57.6	25.9	32.8
March	39.9	35.2	44.6	12.7	26.7	37.9	39.5	58.0	31.5	38.1
March quarter	38.1	32.9	42.2	13.6	25.3	35.7	37.2	55.3	30.3	36.0

(a) Comprising establishments with 15 or more rooms or units. See Explanatory Notes, paragraph 7.

STAR GRADING

<i>Period</i>	<i>Licensed hotels with facilities</i>	<i>Motels and guest houses</i>	<i>Serviced apartments</i>	1	2	3	4	5	<i>Ungraded</i>	<i>Total</i>
GUEST ARRIVALS ('000)										
2001										
<i>March quarter</i>	153.7	248.6	52.0	2.9	53.5	204.5	130.5	52.0	10.9	454.3
2002										
January	54.9	90.6	16.0	1.1	19.6	76.2	45.7	15.9	3.0	161.5
February	51.4	70.2	14.5	0.8	15.3	59.1	41.0	17.8	2.0	136.2
March	59.6	91.1	17.9	0.9	19.1	77.5	50.1	18.7	2.4	168.7
<i>March quarter</i>	165.9	252.0	48.5	2.9	54.0	212.9	136.8	52.4	7.3	466.3
AVERAGE LENGTH OF STAY (days)										
2001										
<i>March quarter</i>	2.1	1.8	3.0	1.7	1.7	1.9	2.3	2.3	2.4	2.0
2002										
<i>March quarter</i>	2.1	1.8	3.5	1.4	1.7	1.8	2.4	2.4	2.5	2.1
TAKINGS FROM ACCOMMODATION (\$'000)										
2001										
<i>March quarter</i>	25 686	21 889	7 955	133	3 088	17 128	21 182	13 049	950	55 530
2002										
January	7 781	7 268	2 706	47	1 105	5 837	6 712	3 807	247	17 756
February	9 130	6 630	2 521	37	916	5 231	7 014	4 866	216	18 281
March	10 410	8 569	3 227	41	1 236	6 695	8 580	5 390	265	22 206
<i>March quarter</i>	27 321	22 467	8 454	126	3 257	17 763	22 306	14 063	728	58 243
AVERAGE TAKINGS PER ROOM NIGHT OCCUPIED (\$)										
2001										
<i>March quarter</i>	122.1	84.4	102.9	39.7	58.1	78.8	121.7	150.6	75.8	101.5
2002										
January	113.5	86.2	102.0	50.9	60.0	82.4	114.0	139.7	79.9	99.0
February	123.3	85.7	101.0	46.9	57.5	80.3	114.6	159.1	80.7	103.7
March	124.8	87.1	105.5	49.4	60.8	82.7	116.0	163.3	77.9	104.6
<i>March quarter</i>	120.9	86.4	103.0	49.2	59.6	81.9	115.0	154.8	79.4	102.5
AVERAGE TAKINGS PER AVAILABLE ROOM NIGHT (\$)										
2001										
<i>March quarter</i>	73.1	46.6	69.1	9.2	22.9	44.7	79.9	114.8	37.7	59.3
2002										
January	62.0	45.1	67.5	11.2	23.9	45.6	66.2	97.2	33.2	54.4
February	79.7	45.6	69.6	9.7	22.0	45.2	75.5	137.6	32.2	61.7
March	82.1	53.2	80.5	9.6	26.7	52.3	83.4	137.7	35.6	67.7
<i>March quarter</i>	74.5	48.0	72.6	10.2	24.3	47.8	75.1	123.7	33.7	61.3

(a) Comprising establishments with 15 or more rooms or units. See Explanatory Notes, paragraph 7.

7

HOTELS, MOTELS, GUEST HOUSES AND SERVICED APARTMENTS (a)—WA

STAR GRADING

<i>Period</i>	<i>Licensed hotels with facilities</i>	<i>Motels and guest houses</i>	<i>Serviced apartments</i>	<i>1 and Ungraded</i>	<i>2</i>	<i>3</i>	<i>4</i>	<i>5</i>	<i>Total</i>
ESTABLISHMENTS, CAPACITY AND EMPLOYMENT (number)									
March quarter 2001									
Establishments	132	125	70	85	23	135	69	15	327
Guest rooms	9 532	5 830	3 895	2 838	778	7 439	5 595	2 607	19 257
Bed spaces	24 039	15 843	13 149	7 080	1 969	20 539	16 343	7 100	53 031
Persons employed	6 672	1 960	1 395	1 474	363	2 821	2 944	2 425	10 027
March quarter 2002									
Establishments	130	125	71	80	22	136	74	14	326
Guest rooms	9 479	5 616	4 183	2 564	679	7 473	5 881	2 681	19 278
Bed spaces	23 929	15 283	14 552	6 599	1 753	20 602	17 105	7 705	53 764
Persons employed	6 357	1 726	1 476	1 239	341	2 737	2 930	2 312	9 559
ROOM NIGHTS OCCUPIED ('000)									
2001									
<i>March quarter</i>	490.8	245.8	206.2	102.7	23.2	337.4	314.5	164.9	942.7
2002									
January	155.3	83.3	80.7	30.8	8.3	114.9	108.3	57.0	319.3
February	156.9	75.7	63.9	27.2	7.2	105.1	104.0	53.1	296.6
March	174.1	85.7	76.4	31.4	8.9	120.9	117.2	57.8	336.2
<i>March quarter</i>	486.3	244.7	221.0	89.4	24.4	340.9	329.5	167.9	952.1
ROOM OCCUPANCY RATES (%)									
2001									
<i>March quarter</i>	57.2	46.8	58.8	40.2	33.1	50.4	62.5	70.3	54.4
2002									
January	52.8	47.8	62.3	38.8	39.4	49.6	59.4	68.6	53.4
February	59.1	48.2	54.6	37.9	38.1	50.2	63.1	70.7	54.9
March	59.3	49.2	58.9	39.5	42.3	52.2	64.3	69.6	56.3
<i>March quarter</i>	57.0	48.4	58.7	38.7	40.0	50.7	62.2	69.6	54.9
GUEST NIGHTS ('000)									
2001									
<i>March quarter</i>	767.2	430.0	461.5	167.8	38.6	601.1	559.3	291.8	1 658.7
2002									
January	261.9	157.6	208.4	52.9	15.0	224.0	223.9	112.2	627.9
February	235.9	123.1	137.8	41.0	10.6	178.6	177.2	89.5	496.9
March	267.6	147.7	175.0	50.5	14.3	213.9	209.4	102.1	590.3
<i>March quarter</i>	765.5	428.5	521.2	144.5	39.9	616.5	610.5	303.8	1 715.2
BED OCCUPANCY RATES (%)									
2001									
<i>March quarter</i>	35.5	30.2	39.0	26.3	21.8	32.5	38.0	45.7	34.8
2002									
January	35.3	33.3	46.2	25.9	27.6	35.1	42.2	47.0	37.7
February	35.2	28.8	33.8	22.2	21.5	31.0	37.0	41.5	33.0
March	36.1	31.2	38.8	24.7	26.4	33.5	39.5	42.8	35.4
<i>March quarter</i>	35.5	31.2	39.8	24.3	25.3	33.3	39.7	43.8	35.4

(a) Comprising establishments with 15 or more rooms or units. See Explanatory Notes, paragraph 7.

7 HOTELS, MOTELS, GUEST HOUSES AND SERVICED APARTMENTS (a)—WA *continued*

STAR GRADING

Period	Licensed hotels with facilities	Motels and guest houses	Serviced apartments	1 and Ungraded	2	3	4	5	Total
GUEST ARRIVALS ('000)									
2001									
March quarter	330.6	209.6	135.5	66.2	19.1	268.3	226.0	96.0	675.6
2002									
January	119.5	71.7	54.5	22.0	8.2	96.1	85.6	33.9	245.8
February	111.5	57.0	41.4	17.7	6.4	77.1	76.7	32.0	209.9
March	126.9	67.4	50.8	21.4	8.0	91.3	88.1	36.3	245.0
March quarter	357.9	196.0	146.8	61.1	22.5	264.5	250.4	102.2	700.7
AVERAGE LENGTH OF STAY (days)									
2001									
March quarter	2.3	2.1	3.4	2.5	2.0	2.2	2.5	3.0	2.5
2002									
March quarter	2.1	2.2	3.6	2.4	1.8	2.3	2.4	3.0	2.4
TAKINGS FROM ACCOMMODATION (\$'000)									
2001									
March quarter	56 168	20 050	22 346	6 820	1 735	27 529	37 137	25 343	98 564
2002									
January	17 099	7 212	9 936	2 312	699	9 944	12 697	8 595	34 247
February	17 145	6 239	6 921	1 853	522	8 687	11 766	7 477	30 305
March	19 195	7 019	8 331	2 183	678	10 005	13 212	8 468	34 545
March quarter	53 438	20 470	25 188	6 348	1 898	28 635	37 676	24 540	99 097
AVERAGE TAKINGS PER ROOM NIGHT OCCUPIED (\$)									
2001									
March quarter	114.5	81.6	108.4	66.4	74.9	81.6	118.1	153.7	104.6
2002									
January	110.1	86.6	123.1	75.0	84.3	86.5	117.2	150.8	107.3
February	109.3	82.4	108.3	68.2	72.2	82.7	113.2	140.9	102.2
March	110.2	81.9	109.1	69.5	76.2	82.8	112.7	146.4	102.8
March quarter	109.9	83.6	114.0	71.0	77.7	84.0	114.4	146.2	104.1
AVERAGE TAKINGS PER AVAILABLE ROOM NIGHT (\$)									
2001									
March quarter	65.5	38.2	63.7	26.7	24.8	41.1	73.7	108.0	56.9
2002									
January	58.2	41.4	76.6	29.1	33.2	42.9	69.6	103.4	57.3
February	64.6	39.7	59.1	25.8	27.5	41.5	71.5	99.6	56.1
March	65.3	40.3	64.2	27.5	32.2	43.2	72.5	101.9	57.8
March quarter	62.6	40.5	66.9	27.5	31.1	42.6	71.2	101.7	57.1

(a) Comprising establishments with 15 or more rooms or units. See Explanatory Notes, paragraph 7.

STAR GRADING

Period	Licensed hotels with facilities	Motels and guest houses	Serviced apartments	1 and ungraded	2	3	4 and 5	Total
ESTABLISHMENTS, CAPACITY AND EMPLOYMENT (number)								
March quarter 2001								
Establishments	54	49	25	9	16	71	32	128
Guest rooms	2 915	1 667	880	248	510	2 636	2 068	5 462
Bed spaces	7 999	5 163	3 224	759	1 329	8 099	6 199	16 386
Persons employed	2 822	721	437	205	245	1 312	2 218	3 980
March quarter 2002								
Establishments	53	49	26	11	14	71	32	128
Guest rooms	2 899	1 650	1 009	303	443	2 626	2 186	5 558
Bed spaces	7 945	5 124	3 407	966	1 098	8 049	6 363	16 476
Persons employed	2 700	695	531	207	202	1 292	2 225	3 926
ROOM NIGHTS OCCUPIED ('000)								
2001								
March quarter	174.3	102.4	58.4	10.7	18.2	164.1	142.0	335.1
2002								
January	51.6	32.0	20.6	4.6	4.2	49.9	45.5	104.2
February	54.2	31.8	19.3	4.4	4.8	49.2	46.8	105.2
March	61.1	35.4	22.8	4.7	5.8	56.8	52.0	119.4
March quarter	166.9	99.2	62.7	13.6	14.8	156.0	144.3	328.8
ROOM OCCUPANCY RATES (%)								
2001								
March quarter	66.4	68.2	73.8	48.0	39.7	69.2	76.3	68.2
2002								
January	57.5	62.5	65.7	48.6	30.5	61.3	67.2	60.5
February	66.7	68.8	68.2	51.4	38.8	67.0	76.5	67.6
March	68.0	69.3	73.0	49.9	42.6	69.8	76.7	69.3
March quarter	64.0	66.8	69.0	49.9	37.2	66.0	73.4	65.7
GUEST NIGHTS ('000)								
2001								
March quarter	292.1	202.1	133.9	23.8	29.7	328.8	245.9	628.2
2002								
January	93.5	68.6	53.9	12.5	7.1	111.0	85.4	216.0
February	89.9	61.1	41.1	9.6	7.8	96.8	77.8	192.0
March	102.6	70.2	49.5	10.4	10.1	113.6	88.3	222.4
March quarter	286.0	199.9	144.5	32.5	25.0	321.4	251.6	630.4
BED OCCUPANCY RATES (%)								
2001								
March quarter	40.6	43.5	46.2	34.8	24.8	45.1	44.1	42.6
2002								
January	38.0	43.2	51.1	41.9	20.7	44.5	43.3	42.3
February	40.4	42.6	43.1	35.6	25.4	42.9	43.7	41.6
March	41.7	44.2	46.9	34.6	29.7	45.5	44.8	43.5
March quarter	40.0	43.3	47.1	37.4	25.3	44.4	43.9	42.5

(a) Comprising establishments with 15 or more rooms or units. See Explanatory Notes, paragraph 7.

STAR GRADING

Period	Licensed hotels with facilities	Motels and guest houses	Serviced apartments	1 and ungraded	2	3	4 and 5	Total
GUEST ARRIVALS ('000)								
2001								
March quarter	170.1	109.5	58.6	11.4	18.7	190.7	117.3	338.1
2002								
January	50.9	35.8	21.7	5.5	4.2	60.4	38.3	108.5
February	50.4	33.2	17.9	4.9	4.6	54.4	37.6	101.5
March	57.1	38.7	21.5	4.9	6.1	64.0	42.4	117.4
March quarter	158.4	107.7	61.1	15.2	14.9	178.9	118.3	327.3
AVERAGE LENGTH OF STAY (days)								
2001								
March quarter	1.7	1.8	2.3	2.1	1.6	1.7	2.1	1.9
2002								
March quarter	1.8	1.9	2.4	2.1	1.7	1.8	2.1	1.9
TAKINGS FROM ACCOMMODATION (\$'000)								
2001								
March quarter	17 081	9 553	7 088	919	1 092	13 908	17 803	33 722
2002								
January	4 957	3 086	2 580	472	258	4 377	5 516	10 623
February	5 115	2 887	2 201	397	285	4 080	5 442	10 203
March	5 673	3 243	2 682	437	357	4 769	6 035	11 598
March quarter	15 745	9 216	7 463	1 305	899	13 226	16 994	32 424
AVERAGE TAKINGS PER ROOM NIGHT OCCUPIED (\$)								
2001								
March quarter	98.0	93.3	121.3	85.8	60.0	84.7	125.4	100.6
2002								
January	96.0	96.5	125.5	103.4	61.6	87.7	121.2	102.0
February	94.4	90.9	114.2	91.0	59.2	82.9	116.2	97.0
March	92.8	91.5	117.5	93.1	61.0	83.9	116.1	97.2
March quarter	94.3	92.9	119.1	95.9	60.6	84.8	117.7	98.6
AVERAGE TAKINGS PER AVAILABLE ROOM NIGHT (\$)								
2001								
March quarter	65.1	63.7	89.5	41.2	23.8	58.6	95.7	68.6
2002								
January	55.2	60.3	82.5	50.2	18.8	53.8	81.4	61.7
February	63.0	62.5	77.9	46.8	23.0	55.5	88.9	65.6
March	63.1	63.4	85.7	46.5	26.0	58.6	89.1	67.3
March quarter	60.3	62.1	82.2	47.9	22.6	56.0	86.4	64.8

(a) Comprising establishments with 15 or more rooms or units. See Explanatory Notes, paragraph 7.

STAR GRADING

Period	Licensed hotels with facilities	Motels and guest houses	Serviced apartments	1 and Ungraded	2	3	4 and 5	Total
ESTABLISHMENTS, CAPACITY AND EMPLOYMENT (number)								
March quarter 2001								
Establishments	23	50	17	22	19	33	16	90
Guest rooms	1 941	3 164	1 142	724	785	2 463	2 275	6 247
Bed spaces	5 488	9 446	3 900	2 029	2 412	7 572	6 821	18 834
Persons employed	1 646	1 107	370	296	250	956	1 621	3 123
March quarter 2002								
Establishments	23	49	18	22	19	33	16	90
Guest rooms	1 959	3 122	1 192	785	775	2 445	2 268	6 273
Bed spaces	5 328	9 408	3 905	2 135	2 414	7 672	6 420	18 641
Persons employed	1 633	1 036	323	294	263	894	1 541	2 992
ROOM NIGHTS OCCUPIED ('000)								
2001								
March quarter	86.6	116.7	49.2	21.4	19.7	100.2	111.3	252.6
2002								
January	24.8	30.7	15.0	7.6	6.1	27.8	29.0	70.5
February	28.9	33.6	15.9	7.6	5.7	29.2	35.8	78.3
March	32.5	44.1	18.0	9.7	7.0	37.2	40.8	94.6
March quarter	86.2	108.3	49.0	24.9	18.7	94.2	105.6	243.5
ROOM OCCUPANCY RATES (%)								
2001								
March quarter	49.6	41.0	47.9	32.8	27.9	45.2	54.4	44.9
2002								
January	40.8	31.7	40.7	31.1	25.3	36.7	41.3	36.2
February	52.6	38.4	47.7	34.7	26.1	42.7	56.4	44.6
March	53.5	45.5	48.8	39.8	29.1	49.1	58.0	48.7
March quarter	48.9	38.5	45.7	35.2	26.8	42.8	51.7	43.1
GUEST NIGHTS ('000)								
2001								
March quarter	139.3	203.2	93.2	38.4	32.6	187.7	176.9	435.7
2002								
January	40.3	52.8	31.7	13.9	9.6	53.3	48.0	124.8
February	43.7	53.1	28.6	12.9	8.0	51.0	53.5	125.4
March	49.6	71.2	33.3	16.4	10.6	67.3	59.8	154.1
March quarter	133.6	177.1	93.7	43.2	28.2	171.6	161.4	404.3
BED OCCUPANCY RATES (%)								
2001								
March quarter	28.2	23.9	26.6	21.1	15.0	27.5	28.8	25.7
2002								
January	24.4	18.1	26.2	21.0	12.9	22.4	24.1	21.6
February	29.3	20.1	26.2	21.6	11.8	23.8	29.8	24.0
March	30.0	24.4	27.5	24.7	14.1	28.3	30.1	26.7
March quarter	27.9	20.9	26.7	22.5	13.0	24.9	27.9	24.1

(a) Comprising establishments with 15 or more rooms or units. See Explanatory Notes, paragraph 7.

STAR GRADING

Period	Licensed hotels with facilities	Motels and guest houses	Serviced apartments	1 and Ungraded	2	3	4 and 5	Total
GUEST ARRIVALS ('000)								
2001								
March quarter	87.4	113.0	37.1	17.6	19.8	110.0	90.1	237.5
2002								
January	24.1	30.7	10.7	5.6	5.9	30.6	23.4	65.5
February	25.5	31.2	10.5	5.3	4.4	30.7	26.8	67.2
March	29.4	42.3	12.0	6.6	6.5	39.6	31.0	83.8
March quarter	79.0	104.2	33.2	17.6	16.8	100.8	81.2	216.5
AVERAGE LENGTH OF STAY (days)								
2001								
March quarter	1.6	1.8	2.5	2.2	1.6	1.7	2.0	1.8
2002								
March quarter	1.7	1.7	2.8	2.5	1.7	1.7	2.0	1.9
TAKINGS FROM ACCOMMODATION (\$'000)								
2001								
March quarter	11 983	11 026	5 084	1 386	1 266	11 313	14 127	28 092
2002								
January	3 319	2 901	1 552	460	373	3 260	3 680	7 772
February	3 732	3 205	1 608	433	335	3 399	4 378	8 545
March	4 467	4 203	1 795	593	450	4 351	5 071	10 465
March quarter	11 518	10 309	4 955	1 486	1 158	11 009	13 129	26 782
AVERAGE TAKINGS PER ROOM NIGHT OCCUPIED (\$)								
2001								
March quarter	138.3	94.5	103.2	64.8	64.2	113.0	126.9	111.2
2002								
January	134.0	94.5	103.3	60.7	61.4	117.2	126.7	110.3
February	129.3	95.5	101.0	56.7	59.3	116.2	122.2	109.1
March	137.4	95.4	99.5	61.2	64.3	117.0	124.4	110.6
March quarter	133.7	95.2	101.1	59.7	61.9	116.8	124.3	110.0
AVERAGE TAKINGS PER AVAILABLE ROOM NIGHT (\$)								
2001								
March quarter	68.6	38.7	49.5	21.3	17.9	51.0	69.0	50.0
2002								
January	54.7	30.0	42.0	18.9	15.5	43.0	52.3	40.0
February	68.0	36.7	48.2	19.7	15.5	49.6	68.9	48.6
March	73.6	43.4	48.6	24.4	18.7	57.4	72.1	53.8
March quarter	65.3	36.7	46.2	21.0	16.6	50.0	64.3	47.4

(a) Comprising establishments with 15 or more rooms or units. See Explanatory Notes, paragraph 7.

STAR GRADING

<i>Period</i>	<i>Licensed hotels with facilities</i>	<i>Motels and guest houses</i>	<i>Serviced apartments</i>	<i>1 and ungraded</i>	<i>2</i>	<i>3</i>	<i>4 and 5</i>	<i>Total</i>
ESTABLISHMENTS, CAPACITY AND EMPLOYMENT (number)								
March quarter 2001								
Establishments	15	25	19	9	7	21	22	59
Guest rooms	1 908	1 686	1 410	493	480	1 482	2 549	5 004
Bed spaces	4 829	5 208	4 780	1 472	1 595	4 561	7 189	14 817
Persons employed	1 285	626	408	143	94	572	1 510	2 319
March quarter 2002								
Establishments	15	27	20	10	7	21	24	62
Guest rooms	1 902	1 857	1 469	482	446	1 480	2 820	5 228
Bed spaces	4 829	5 628	4 970	1 445	1 415	4 595	7 972	15 427
Persons employed	1 304	656	427	123	91	575	1 598	2 387
ROOM NIGHTS OCCUPIED ('000)								
2001								
<i>March quarter</i>	102.5	81.0	84.0	23.2	23.9	72.3	148.1	267.5
2002								
January	32.2	32.0	31.1	8.1	7.6	26.3	53.3	95.4
February	35.0	30.5	29.9	7.3	7.2	25.2	55.8	95.5
March	36.1	34.7	31.7	8.3	7.9	27.6	58.7	102.5
<i>March quarter</i>	103.3	97.2	92.7	23.8	22.7	79.1	167.8	293.3
ROOM OCCUPANCY RATES (%)								
2001								
<i>March quarter</i>	59.7	53.4	66.2	52.2	55.2	54.2	64.6	59.4
2002								
January	54.6	55.6	68.4	54.5	55.3	57.4	60.9	58.8
February	65.8	58.7	72.6	54.1	57.3	60.7	70.7	65.2
March	61.2	60.3	69.6	55.7	57.0	60.1	67.2	63.2
<i>March quarter</i>	60.4	58.2	70.1	54.8	56.5	59.4	66.1	62.3
GUEST NIGHTS ('000)								
2001								
<i>March quarter</i>	154.3	140.2	160.4	39.2	47.7	132.3	235.7	454.9
2002								
January	55.6	66.8	68.2	14.7	22.1	56.2	97.5	190.5
February	50.2	47.8	51.7	12.1	12.4	44.1	81.1	149.7
March	49.5	59.2	57.5	15.6	14.6	50.3	85.8	166.2
<i>March quarter</i>	155.3	173.7	177.4	42.4	49.0	150.6	264.4	506.4
BED OCCUPANCY RATES (%)								
2001								
<i>March quarter</i>	35.5	29.9	37.3	29.6	33.2	32.2	36.4	34.1
2002								
January	37.1	38.3	44.3	32.9	50.4	39.5	39.4	39.8
February	37.2	30.3	37.2	30.0	31.2	34.3	36.4	34.7
March	33.1	33.9	37.3	34.8	33.2	35.3	34.7	34.7
<i>March quarter</i>	35.7	34.3	39.6	32.6	38.5	36.4	36.9	36.5

(a) Comprising establishments with 15 or more rooms or units. See Explanatory Notes, paragraph 7.

STAR GRADING

<i>Period</i>	<i>Licensed hotels with facilities</i>	<i>Motels and guest houses</i>	<i>Serviced apartments</i>	<i>1 and ungraded</i>	<i>2</i>	<i>3</i>	<i>4 and 5</i>	<i>Total</i>
GUEST ARRIVALS ('000)								
2001								
<i>March quarter</i>	87.3	74.1	48.0	12.5	17.0	70.6	109.2	209.3
2002								
January	28.6	29.9	14.6	5.9	6.4	22.1	38.7	73.1
February	27.9	25.3	12.6	4.6	5.0	18.5	37.7	65.8
March	27.7	29.9	14.7	5.9	5.7	21.1	39.7	72.3
<i>March quarter</i>	84.2	85.1	41.9	16.4	17.0	61.7	116.1	211.2
AVERAGE LENGTH OF STAY (days)								
2001								
<i>March quarter</i>	1.8	1.9	3.3	3.1	2.8	1.9	2.2	2.2
2002								
<i>March quarter</i>	1.8	2.0	4.2	2.6	2.9	2.4	2.3	2.4
TAKINGS FROM ACCOMMODATION (\$'000)								
2001								
<i>March quarter</i>	14 299	6 790	9 522	2 245	1 558	6 340	20 468	30 611
2002								
January	4 025	2 730	3 657	637	600	2 422	6 753	10 412
February	4 598	2 496	3 281	546	467	2 155	7 207	10 375
March	4 887	2 811	3 507	621	519	2 367	7 699	11 205
<i>March quarter</i>	13 510	8 037	10 445	1 804	1 586	6 944	21 659	31 992
AVERAGE TAKINGS PER ROOM NIGHT OCCUPIED (\$)								
2001								
<i>March quarter</i>	139.5	83.9	113.3	97.0	65.3	87.7	138.2	114.4
2002								
January	125.0	85.3	117.5	78.3	78.6	92.0	126.8	109.2
February	131.2	81.8	109.8	74.7	65.3	85.6	129.1	108.7
March	135.4	81.0	110.6	74.6	65.8	85.8	131.1	109.3
<i>March quarter</i>	130.7	82.6	112.7	75.9	69.9	87.8	129.1	109.1
AVERAGE TAKINGS PER AVAILABLE ROOM NIGHT (\$)								
2001								
<i>March quarter</i>	83.3	44.8	75.0	50.6	36.1	47.5	89.2	68.0
2002								
January	68.3	47.4	80.3	42.6	43.4	52.8	77.2	64.2
February	86.3	48.0	79.8	40.4	37.4	52.0	91.3	70.9
March	82.9	48.8	77.0	41.6	37.5	51.6	88.1	69.1
<i>March quarter</i>	78.9	48.1	79.0	41.6	39.5	52.1	85.3	68.0

(a) Comprising establishments with 15 or more rooms or units. See Explanatory Notes, paragraph 7.

Period	South Coast	Illawarra	Sydney	Snowy Mountains	Capital Country	The Murray	Riverina	Explorer Country
ESTABLISHMENTS, CAPACITY AND EMPLOYMENT (number)								
March quarter 2001								
Establishments	81	33	298	59	68	99	68	122
Guest rooms	1 998	1 123	33 728	2 361	2 147	2 876	1 932	3 541
Bed spaces	6 143	3 497	83 796	9 344	6 356	9 057	5 707	10 910
Persons employed	656	692	23 261	325	835	960	684	1 223
March quarter 2002								
Establishments	82	33	292	58	67	99	69	120
Guest rooms	2 006	1 125	32 714	2 318	2 103	2 851	1 949	3 574
Bed spaces	6 240	3 524	79 272	9 003	6 078	8 820	5 743	10 634
Persons employed	657	630	21 027	328	847	925	649	1 192
ROOM NIGHTS OCCUPIED ('000)								
2001								
March quarter	98.9	62.8	2 037.9	31.7	89.5	129.2	90.7	144.8
2002								
January	38.1	20.3	624.4	10.9	30.2	45.6	29.6	50.4
February	28.1	18.4	675.0	7.8	27.3	38.7	28.0	45.3
March	34.6	19.4	714.5	10.2	33.0	52.7	34.0	58.2
March quarter	100.8	58.0	2 013.9	28.9	90.4	137.0	91.6	153.9
ROOM OCCUPANCY RATES (%)								
2001								
March quarter	55.8	62.1	67.1	14.9	46.3	49.9	52.1	45.4
2002								
January	61.3	58.1	61.6	15.1	46.3	51.6	48.9	45.5
February	50.1	58.3	73.7	12.1	46.3	48.5	51.3	45.3
March	55.6	55.7	70.5	14.2	50.6	59.6	56.3	52.5
March quarter	55.8	57.3	68.4	13.8	47.8	53.4	52.2	47.9
GUEST NIGHTS ('000)								
2001								
March quarter	201.3	112.6	3 370.6	68.9	158.7	250.2	147.8	253.4
2002								
January	85.0	42.1	1 113.5	25.7	58.9	101.7	53.6	98.7
February	53.0	30.4	1 090.4	15.4	46.0	69.6	42.3	72.2
March	66.5	33.6	1 187.6	21.8	57.8	101.8	56.0	105.3
March quarter	204.4	106.0	3 391.5	62.9	162.7	273.1	151.9	276.2
GUEST ARRIVALS ('000)								
2001								
March quarter	114.5	61.1	1 294.5	32.0	102.3	139.2	103.4	180.6
2002								
January	44.3	18.5	417.8	12.4	37.7	50.9	38.5	75.8
February	30.7	15.4	435.8	8.4	29.9	41.0	30.3	50.9
March	39.1	17.6	475.2	11.1	36.8	58.3	40.3	69.8
March quarter	114.0	51.5	1 328.9	31.9	104.4	150.3	109.1	196.4
TAKINGS FROM ACCOMMODATION (\$'000)								
2001								
March quarter	8 475	6 741	312 125	2 629	8 066	10 233	6 909	10 739
2002								
January	3 734	2 286	89 530	897	2 659	3 874	2 304	3 734
February	2 219	1 957	98 209	595	2 408	3 069	2 191	3 371
March	2 908	2 146	103 299	802	3 179	4 162	2 716	4 401
March quarter	8 861	6 389	291 039	2 294	8 246	11 106	7 211	11 506

<i>Period</i>	<i>Hunter</i>	<i>North Coast NSW</i>	<i>Northern Rivers Tropical NSW</i>	<i>Big Sky Country</i>	<i>The Living Outback</i>	<i>Central Coast</i>	<i>Blue Mountains</i>
ESTABLISHMENTS, CAPACITY AND EMPLOYMENT (number)							
March quarter 2001							
Establishments	100	124	75	90	38	40	33
Guest rooms	3 855	3 798	2 096	2 481	949	1 510	1 246
Bed spaces	12 293	12 284	6 580	7 433	2 772	5 128	3 517
Persons employed	2 206	1 636	676	824	291	907	976
March quarter 2002							
Establishments	100	127	76	91	38	39	33
Guest rooms	3 945	3 928	2 149	2 524	944	1 514	1 262
Bed spaces	12 211	12 390	6 797	7 560	2 720	4 984	3 531
Persons employed	2 202	1 723	659	854	264	882	933
ROOM NIGHTS OCCUPIED ('000)							
2001							
<i>March quarter</i>	177.4	193.6	94.2	107.0	34.7	71.6	57.2
2002							
January	66.3	86.5	41.3	37.5	10.9	30.2	14.1
February	58.0	59.3	29.8	30.2	10.3	22.0	14.7
March	69.9	72.1	34.9	38.9	14.4	23.9	19.6
<i>March quarter</i>	194.2	217.9	106.0	106.6	35.7	76.1	48.4
ROOM OCCUPANCY RATES (%)							
2001							
<i>March quarter</i>	51.1	56.6	49.9	47.9	40.6	52.7	51.0
2002							
January	54.2	71.0	62.0	47.9	37.3	64.4	36.2
February	52.5	53.9	49.5	42.7	39.1	51.9	41.6
March	57.2	59.2	52.4	49.7	49.2	51.0	50.0
<i>March quarter</i>	54.7	61.6	54.8	46.9	42.0	55.9	42.6
GUEST NIGHTS ('000)							
2001							
<i>March quarter</i>	335.4	405.7	188.4	185.8	55.7	154.3	102.9
2002							
January	142.6	204.4	92.5	73.0	18.7	72.7	26.6
February	102.8	112.6	55.1	45.3	15.6	41.1	25.9
March	128.4	145.8	66.5	64.6	23.6	46.7	35.6
<i>March quarter</i>	373.8	462.9	214.1	182.9	57.9	160.5	88.1
GUEST ARRIVALS ('000)							
2001							
<i>March quarter</i>	184.5	225.0	106.8	128.8	32.5	68.4	64.6
2002							
January	67.8	113.5	46.2	47.0	12.8	26.3	15.1
February	54.5	67.7	31.2	31.7	10.2	20.4	15.8
March	68.2	82.7	36.8	44.6	14.3	22.8	21.7
<i>March quarter</i>	190.4	263.8	114.2	123.3	37.3	69.5	52.6
TAKINGS FROM ACCOMMODATION (\$'000)							
2001							
<i>March quarter</i>	21 816	18 346	8 614	8 153	2 231	9 351	7 441
2002							
January	8 721	9 994	4 331	3 285	739	3 963	1 642
February	6 986	5 247	2 656	2 224	658	2 677	1 792
March	8 533	6 580	3 169	2 909	972	2 997	2 567
<i>March quarter</i>	24 240	21 822	10 156	8 418	2 369	9 637	6 002

Period	Melbourne	Wimmera	Mallee	Western	Western Grampians	Bendigo Loddon	Peninsula	Central Murray	Goulburn	High Country
ESTABLISHMENTS, CAPACITY AND EMPLOYMENT (number)										
March quarter 2001										
Establishments	235	6	42	53	20	31	21	21	27	72
Guest rooms	18 765	117	1 264	1 407	478	783	739	566	696	1 931
Bed spaces	47 198	331	3 791	4 326	1 368	2 382	1 972	1 657	2 006	6 803
Persons employed	15 926	28	576	772	216	349	408	158	373	553
March quarter 2002										
Establishments	238	6	41	55	19	31	21	23	27	73
Guest rooms	19 068	117	1 229	1 492	472	781	751	602	700	1 937
Bed spaces	48 306	336	3 659	4 443	1 344	2 333	2 025	1 708	2 020	6 834
Persons employed	15 141	29	469	776	207	358	427	176	364	602
ROOM NIGHTS OCCUPIED ('000)										
2001										
March quarter	1 230.2	3.8	51.8	85.4	21.1	37.7	36.1	24.5	31.1	46.6
2002										
January	383.6	1.0	18.1	33.7	6.0	12.0	11.3	9.6	10.8	17.1
February	380.3	1.0	16.0	26.9	6.5	11.7	11.4	7.5	9.8	12.4
March	419.1	1.3	21.4	31.2	8.6	15.2	12.6	10.3	12.8	18.1
March quarter	1 183.0	3.3	55.4	91.8	21.1	38.9	35.3	27.4	33.3	47.7
ROOM OCCUPANCY RATES (%)										
2001										
March quarter	73.0	36.0	45.6	67.5	49.0	53.4	54.2	48.0	49.7	27.3
2002										
January	64.9	28.5	47.5	72.9	41.0	49.5	48.4	51.4	49.7	28.4
February	71.2	29.3	46.4	64.3	49.3	53.4	54.3	44.5	49.9	22.9
March	70.9	36.1	56.1	67.5	58.7	63.0	54.0	55.2	58.9	30.2
March quarter	68.9	31.4	50.1	68.4	49.7	55.3	52.2	50.6	52.9	27.3
GUEST NIGHTS ('000)										
2001										
March quarter	1 997.7	6.3	88.2	175.7	34.8	70.0	68.7	47.6	52.7	97.2
2002										
January	682.6	2.0	35.5	73.1	11.8	24.7	24.2	18.3	18.5	39.8
February	597.6	1.5	25.6	49.1	9.7	19.6	20.6	12.2	14.8	25.5
March	674.2	2.3	38.0	59.7	14.7	28.8	22.8	17.9	21.8	38.9
March quarter	1 954.4	5.7	99.0	181.9	36.2	73.2	67.6	48.4	55.1	104.2
GUEST ARRIVALS ('000)										
2001										
March quarter	800.2	4.5	51.7	106.9	25.9	43.7	35.0	29.5	34.2	51.5
2002										
January	259.9	1.6	21.1	42.3	9.4	15.4	10.1	11.5	11.8	20.4
February	262.0	1.1	15.3	31.9	7.6	12.7	10.3	8.3	9.8	14.9
March	277.7	1.8	22.6	37.6	10.3	17.9	11.6	11.3	12.3	20.8
March quarter	799.6	4.5	58.9	111.8	27.2	46.0	31.9	31.2	33.9	56.0
TAKINGS FROM ACCOMMODATION (\$'000)										
2001										
March quarter	190 326	219	3 686	8 697	1 648	3 222	4 999	1 997	2 442	3 942
2002										
January	54 256	67	1 387	3 871	541	1 090	1 530	762	850	1 524
February	55 291	59	1 178	2 746	556	1 011	1 470	544	766	1 073
March	64 366	83	1 592	3 108	748	1 434	1 589	782	1 055	1 588
March quarter	173 913	209	4 157	9 725	1 845	3 535	4 589	2 088	2 671	4 185

Period	Lakes	Gippsland	Melbourne East	Geelong	Macedon	Spa Country	Ballarat	Central Highlands	Upper Yarra	Murray East	Phillip Island
ESTABLISHMENTS, CAPACITY AND EMPLOYMENT (number)											
March quarter 2001											
Establishments	24	35	14	22	3	5	25	14	13	13	10
Guest rooms	674	1 034	449	701	72	118	809	337	430	307	346
Bed spaces	1 964	3 056	1 047	1 984	163	284	2 607	1 032	1 087	929	1 198
Persons employed	243	293	472	360	73	108	426	93	256	74	133
March quarter 2002											
Establishments	24	34	12	23	3	5	25	15	11	14	11
Guest rooms	664	1 013	360	803	72	126	872	358	390	423	375
Bed spaces	1 963	2 956	864	2 190	163	301	2 740	1 146	1 028	1 179	1 334
Persons employed	262	302	322	443	44	131	454	95	217	119	161
ROOM NIGHTS OCCUPIED ('000)											
2001											
March quarter	29.1	34.8	15.2	39.2	2.2	4.9	37.7	13.2	11.4	12.7	18.4
2002											
January	11.1	11.5	3.3	14.1	0.3	1.9	14.8	4.8	3.2	4.8	8.6
February	8.2	12.1	4.5	12.0	0.7	1.9	13.6	4.2	3.2	4.0	5.7
March	10.9	16.6	4.4	15.7	0.7	2.3	17.6	5.9	4.8	6.0	6.9
March quarter	30.1	40.1	12.1	41.8	1.8	6.0	45.9	14.9	11.2	14.8	21.2
ROOM OCCUPANCY RATES (%)											
2001											
March quarter	48.0	37.4	37.6	62.2	34.6	46.2	51.8	43.4	29.4	46.1	59.2
2002											
January	53.7	36.5	29.3	56.5	13.0	47.4	54.6	42.9	26.5	36.3	74.2
February	44.2	42.7	44.3	53.6	36.8	53.8	55.6	41.5	29.1	33.8	54.1
March	52.8	52.8	39.3	63.0	32.9	57.9	65.1	53.6	40.0	45.7	59.6
March quarter	50.4	44.0	37.4	57.8	27.3	53.0	58.5	46.1	32.0	38.7	62.9
GUEST NIGHTS ('000)											
2001											
March quarter	60.3	55.7	22.8	69.9	3.2	7.9	79.7	26.5	18.3	22.8	48.9
2002											
January	25.0	19.3	5.8	27.0	0.5	3.1	32.7	9.7	5.4	9.5	25.4
February	14.9	18.2	6.8	18.9	0.9	2.8	26.1	8.1	5.1	7.0	13.8
March	20.0	26.6	6.9	26.6	0.9	3.8	34.8	12.7	7.6	11.1	16.8
March quarter	59.9	64.1	19.6	72.5	2.3	9.7	93.6	30.5	18.1	27.5	56.1
GUEST ARRIVALS ('000)											
2001											
March quarter	37.7	35.1	13.5	37.3	2.1	4.4	48.1	16.9	10.1	15.3	25.4
2002											
January	15.8	11.6	3.8	14.8	0.3	1.9	22.3	5.7	2.6	6.2	9.6
February	10.7	11.6	4.3	11.4	0.6	1.8	15.3	4.9	2.8	4.4	7.0
March	14.2	15.0	4.2	16.2	0.6	2.3	21.4	7.4	3.5	6.6	7.3
March quarter	40.6	38.1	12.3	42.5	1.4	6.0	59.1	18.0	8.9	17.2	23.9
TAKINGS FROM ACCOMMODATION (\$'000)											
2001											
March quarter	2 319	2 593	1 748	4 054	285	763	3 407	987	1 264	851	1 951
2002											
January	1 006	871	412	1 507	31	314	1 323	392	323	417	1 124
February	628	910	540	1 303	91	292	1 287	329	379	291	599
March	835	1 266	543	1 726	85	392	1 596	470	700	439	774
March quarter	2 468	3 048	1 495	4 536	208	998	4 206	1 191	1 402	1 148	2 497

Period	Gold Coast	Brisbane	Sunshine Coast	Hervey Bay/ Maryborough	Darling Downs	Bundaberg
ESTABLISHMENTS, CAPACITY AND EMPLOYMENT (number)						
March quarter 2001						
Establishments	148	163	98	42	64	25
Guest rooms	13 271	9 816	4 536	1 588	1 634	621
Bed spaces	43 715	27 484	15 471	5 453	5 189	1 895
Persons employed	8 610	6 743	2 369	713	585	178
March quarter 2002						
Establishments	149	165	102	42	64	27
Guest rooms	13 311	9 880	4 726	1 583	1 628	683
Bed spaces	43 645	27 179	16 472	5 422	5 106	2 060
Persons employed	8 611	6 623	2 375	714	588	235
ROOM NIGHTS OCCUPIED ('000)						
2001						
March quarter	805.3	511.7	222.2	58.3	67.5	27.3
2002						
January	329.6	169.7	110.3	24.5	23.0	10.3
February	259.8	178.1	76.6	18.3	23.5	9.7
March	266.5	194.2	86.4	23.6	28.3	11.2
March quarter	855.9	541.9	273.3	66.5	74.9	31.2
ROOM OCCUPANCY RATES (%)						
2001						
March quarter	67.4	58.0	54.6	40.8	45.9	48.8
2002						
January	79.9	55.4	75.3	50.0	45.6	49.1
February	69.7	64.4	58.2	41.4	51.6	50.9
March	64.6	63.4	59.3	48.2	56.2	53.0
March quarter	71.4	60.9	64.5	46.7	51.1	51.0
GUEST NIGHTS ('000)						
2001						
March quarter	1 880.5	827.4	587.4	108.0	117.6	48.9
2002						
January	837.5	307.6	312.1	55.1	44.3	21.3
February	549.5	277.0	176.1	33.7	39.1	16.9
March	607.3	305.9	204.9	46.4	50.5	20.1
March quarter	1 994.3	890.5	693.1	135.2	133.8	58.3
GUEST ARRIVALS ('000)						
2001						
March quarter	491.5	370.2	165.4	61.2	81.7	33.8
2002						
January	194.5	123.7	78.0	27.4	30.1	13.2
February	152.8	118.0	55.9	17.9	26.3	10.3
March	167.6	134.7	63.6	23.8	33.2	12.5
March quarter	514.8	376.3	197.5	69.1	89.5	36.0
TAKINGS FROM ACCOMMODATION (\$'000)						
2001						
March quarter	89 919	51 444	28 302	4 467	4 903	2 298
2002						
January	41 256	16 500	15 707	2 181	1 728	925
February	25 217	18 067	8 819	1 328	1 726	794
March	27 640	20 110	10 697	1 859	2 113	920
March quarter	94 114	54 676	35 222	5 368	5 568	2 638

Period	Fitzroy	Mackay Whitsundays (a)	Northern (a)	Tropical North Queensland	Outback	Great Barrier Reef (b)
ESTABLISHMENTS, CAPACITY AND EMPLOYMENT (number)						
March quarter 2001						
Establishments	86	52	24	49	154	52
Guest rooms	3 183	1 780	2 327	2 234	10 127	1 406
Bed spaces	10 238	5 200	8 122	6 495	30 760	3 991
Persons employed	1 639	942	1 896	1 308	4 907	535
March quarter 2002						
Establishments	86	51	27	48	160	54
Guest rooms	3 188	1 647	2 697	2 221	10 379	1 488
Bed spaces	9 871	4 754	9 101	6 497	31 028	4 248
Persons employed	1 600	884	2 191	1 294	4 893	528
ROOM NIGHTS OCCUPIED ('000)						
2001						
March quarter	144.8	74.0	116.6	98.8	459.1	49.7
2002						
January	52.8	26.1	49.6	30.6	150.2	14.8
February	47.3	24.4	33.0	31.0	140.9	15.9
March	54.1	25.7	40.0	35.7	170.8	19.6
March quarter	154.2	76.2	122.6	97.3	461.9	50.2
ROOM OCCUPANCY RATES (%)						
2001						
March quarter	50.5	46.2	57.2	50.6	50.5	39.2
2002						
January	53.5	51.0	59.3	44.5	46.7	32.0
February	53.0	52.9	43.7	49.8	48.6	38.1
March	54.7	50.3	47.8	51.8	53.2	42.5
March quarter	53.7	51.4	50.5	48.7	49.5	37.5
GUEST NIGHTS ('000)						
2001						
March quarter	239.3	127.3	252.1	153.1	894.2	68.9
2002						
January	103.9	51.3	122.4	53.4	303.6	23.4
February	70.4	37.1	67.0	45.0	262.4	22.0
March	87.9	42.4	87.0	57.0	328.0	30.0
March quarter	262.2	130.8	276.4	155.3	893.9	75.4
GUEST ARRIVALS ('000)						
2001						
March quarter	122.1	52.5	76.7	80.0	270.0	43.9
2002						
January	49.8	22.7	32.3	26.7	89.0	15.3
February	35.2	17.4	20.6	23.0	86.0	13.2
March	43.9	20.0	26.3	29.2	103.0	17.7
March quarter	128.9	60.1	79.2	78.9	278.0	46.2
TAKINGS FROM ACCOMMODATION (\$'000)						
2001						
March quarter	12 787	6 027	21 934	8 517	54 284	3 434
2002						
January	4 769	2 251	9 569	2 676	18 106	1 066
February	3 714	1 934	6 284	2 678	15 828	1 171
March	4 417	2 108	7 357	3 183	19 908	1 442
March quarter	12 900	6 292	23 210	8 537	53 843	3 679

(a) Changes in the Statistical Local Areas making up these Tourism Regions have resulted in changes to previously published figures.

(b) Includes those parts of other Tourism Regions which fall within the Great Barrier Reef geographic area. Great Barrier Reef (TR) data is not included in Queensland totals because the establishments in this Region are included in the figures for other Tourism Regions.

Period	Limestone Coast	Murray-lands	Fleurieu Peninsula	Adelaide	Adelaide Hills	Barossa	Riverland	Clare Valley	Flinders Ranges	Outback SA	Eyre Peninsula	Yorke Peninsula	Kangaroo Island
ESTABLISHMENTS, CAPACITY AND EMPLOYMENT (number)													
March quarter 2001													
Establishments	32	4	16	86	4	9	14	5	19	8	24	8	6
Guest rooms	936	96	509	5 596	132	367	504	142	647	386	773	147	167
Bed spaces	2 791	303	1 630	15 800	334	1 024	1 536	441	1 907	1 001	2 186	452	473
Persons employed	442	40	315	3 572	149	258	511	94	271	186	532	70	103
March quarter 2002													
Establishments	34	4	15	86	4	9	14	4	19	8	24	8	5
Guest rooms	986	96	521	5 761	132	366	499	128	652	382	760	147	150
Bed spaces	2 945	304	1 649	15 757	338	1 013	1 480	388	1 938	1 061	2 142	461	408
Persons employed	432	43	277	3 600	130	304	500	73	282	185	539	79	104
ROOM NIGHTS OCCUPIED ('000)													
2001													
March quarter	49.7	3.7	21.0	347.7	6.6	17.0	17.3	6.6	22.1	9.8	31.2	5.1	9.4
2002													
January	16.0	1.4	7.9	108.8	2.1	6.4	6.4	3.0	7.8	3.4	10.7	2.3	3.2
February	13.1	1.1	5.0	116.0	1.9	5.8	6.1	2.6	7.0	3.0	10.2	1.7	2.8
March	19.3	1.8	7.2	134.8	2.6	6.8	8.5	3.2	8.3	4.1	10.7	2.1	3.1
March quarter	48.4	4.3	20.0	359.6	6.6	19.0	21.0	8.7	23.1	10.5	31.6	6.0	9.1
ROOM OCCUPANCY RATES (%)													
2001													
March quarter	59.0	43.3	45.8	69.0	55.8	51.4	38.1	51.7	38.0	28.2	44.8	38.2	62.7
2002													
January	52.3	47.4	48.7	61.4	51.2	56.5	41.3	75.0	38.7	29.0	45.3	50.6	69.2
February	47.6	41.7	34.1	71.9	50.9	56.9	43.8	72.4	38.1	28.5	48.2	41.0	66.6
March	63.2	60.0	44.4	75.5	63.9	60.0	55.0	80.0	41.2	34.2	45.3	45.0	66.7
March quarter	54.6	50.0	42.7	69.5	55.5	57.8	46.8	75.9	39.4	30.6	46.2	45.7	67.5
GUEST NIGHTS ('000)													
2001													
March quarter	82.8	6.9	49.4	578.6	13.1	32.6	29.0	12.0	36.9	14.9	46.4	9.2	18.7
2002													
January	30.9	2.8	20.0	199.6	5.0	14.3	12.0	4.8	14.0	5.9	17.7	4.9	7.0
February	21.1	1.9	10.8	178.0	3.4	10.4	8.5	3.8	11.2	4.5	13.3	2.7	5.2
March	33.7	3.3	15.2	219.3	5.1	13.1	13.2	5.0	14.1	6.4	15.5	3.6	6.0
March quarter	85.7	7.9	46.0	596.9	13.5	37.9	33.7	13.6	39.3	16.8	46.5	11.2	18.2
GUEST ARRIVALS ('000)													
2001													
March quarter	52.4	5.0	29.0	234.9	6.6	20.7	19.2	7.7	25.7	9.8	28.9	5.6	8.7
2002													
January	20.1	2.0	10.7	76.0	1.9	8.3	7.9	2.6	9.5	4.8	11.7	2.9	3.1
February	13.9	1.4	6.7	73.6	1.9	6.9	5.6	2.3	7.8	3.2	8.4	1.6	2.8
March	20.6	2.3	8.6	86.2	2.4	8.4	8.1	3.0	9.8	4.5	9.7	2.1	3.0
March quarter	54.5	5.7	26.0	235.8	6.2	23.7	21.6	7.9	27.1	12.5	29.8	6.7	8.9
TAKINGS FROM ACCOMMODATION (\$'000)													
2001													
March quarter	3 471	224	1 852	40 303	669	1 719	1 195	534	1 500	785	2 099	347	832
2002													
January	1 271	94	769	11 978	211	643	468	258	526	294	741	155	346
February	955	75	421	13 598	203	612	391	231	469	242	711	105	267
March	1 416	118	635	16 022	290	714	589	297	602	327	768	129	299
March quarter	3 642	288	1 826	41 598	704	1 969	1 448	786	1 597	863	2 219	389	912

Period	South East	Goldfields	Midwest	Gascoyne	Pilbara	Kimberley	Perth	Peel	South West	Great Southern	Wheatbelt
ESTABLISHMENTS, CAPACITY AND EMPLOYMENT (number)											
March quarter 2001											
Establishments	10	25	25	11	19	28	102	8	58	20	21
Guest rooms	280	1 066	876	504	1 447	1 521	9 356	456	2 390	763	598
Bed spaces	830	2 769	2 324	1 344	3 049	4 362	25 576	1 576	7 457	2 293	1 451
Persons employed	129	449	345	163	446	649	5 771	174	1 368	300	233
March quarter 2002											
Establishments	10	23	25	11	18	28	101	7	60	21	22
Guest rooms	298	1 046	868	504	1 361	1 556	9 410	345	2 495	790	605
Bed spaces	904	2 721	2 371	1 339	2 888	4 464	26 270	1 223	7 781	2 361	1 442
Persons employed	132	397	322	178	457	487	5 637	168	1 249	304	228
ROOM NIGHTS OCCUPIED ('000)											
2001											
March quarter	15.3	40.7	29.6	14.4	50.5	40.0	568.7	19.6	113.8	31.7	18.5
2002											
January	6.4	12.0	11.5	5.7	15.9	11.0	186.4	6.3	46.2	12.6	5.5
February	4.9	12.4	10.9	4.7	16.3	9.5	181.5	4.7	36.3	9.8	5.7
March	5.8	14.5	12.5	6.5	16.3	14.2	199.2	6.2	42.6	11.9	6.5
March quarter	17.1	39.0	34.9	16.9	48.4	34.6	567.0	17.2	125.1	34.2	17.6
ROOM OCCUPANCY RATES (%)											
2001											
March quarter	60.5	42.4	37.5	31.7	38.8	29.2	67.5	47.7	52.9	46.2	34.4
2002											
January	69.3	37.0	42.6	36.4	37.6	22.7	63.9	59.0	59.8	51.3	29.1
February	58.8	42.4	44.8	33.6	42.7	21.7	68.9	48.3	51.9	44.1	33.7
March	62.4	44.9	46.6	41.6	38.6	29.5	68.3	58.4	55.0	48.6	34.5
March quarter	63.7	41.4	44.6	37.3	39.5	24.7	67.0	55.4	55.7	48.1	32.4
GUEST NIGHTS ('000)											
2001											
March quarter	27.0	58.0	51.2	23.8	63.0	70.3	980.9	48.3	254.1	55.8	26.2
2002											
January	13.7	18.2	21.5	10.8	19.1	21.5	353.8	19.0	115.7	26.2	8.7
February	7.8	16.4	17.1	7.1	18.6	15.1	303.7	10.9	76.0	16.3	7.9
March	9.8	21.2	20.5	10.3	19.8	24.5	341.2	17.2	94.4	21.8	9.5
March quarter	31.3	55.8	59.1	28.2	57.4	61.1	998.6	47.0	286.1	64.3	26.2
GUEST ARRIVALS ('000)											
2001											
March quarter	11.2	26.8	26.7	9.8	24.5	20.3	368.8	18.7	121.6	29.7	17.5
2002											
January	5.6	10.8	10.4	4.5	6.7	6.3	128.3	6.3	47.7	13.2	6.1
February	3.3	8.5	8.1	3.3	6.8	4.8	119.0	4.7	37.2	8.9	5.3
March	4.3	10.5	9.9	4.6	7.2	7.3	132.7	6.1	44.4	11.6	6.3
March quarter	13.2	29.7	28.4	12.5	20.7	18.5	380.0	17.1	129.3	33.7	17.7
TAKINGS FROM ACCOMMODATION (\$'000)											
2001											
March quarter	1 116	3 235	2 163	1 190	3 941	3 497	64 717	1 992	12 716	2 834	1 164
2002											
January	525	1 002	892	492	1 278	959	20 784	765	5 914	1 254	382
February	354	1 050	812	363	1 481	809	19 849	493	3 846	872	375
March	413	1 238	975	510	1 450	1 267	21 960	712	4 532	1 065	423
March quarter	1 292	3 290	2 679	1 365	4 209	3 036	62 593	1 970	14 292	3 192	1 180

Period	Greater Hobart	Southern (a)	East Coast (a)	Northern (a)	Greater Launceston	North West	West Coast
ESTABLISHMENTS, CAPACITY AND EMPLOYMENT (number)							
March quarter 2001							
Establishments	37	5	12	3	30	31	10
Guest rooms	2 040	144	n.p.	n.p.	1 350	972	416
Bed spaces	5 805	419	n.p.	n.p.	4 353	2 757	1 236
Persons employed	1 726	73	n.p.	n.p.	1 114	551	217
March quarter 2002							
Establishments	37	5	12	3	30	31	10
Guest rooms	2 155	144	443	93	1 321	983	419
Bed spaces	5 873	422	1 554	279	4 249	2 858	1 241
Persons employed	1 762	67	251	44	1 065	534	203
ROOM NIGHTS OCCUPIED ('000)							
2001							
March quarter	147.0	7.9	n.p.	n.p.	80.5	44.4	25.5
2002							
January	45.2	2.8	9.3	1.8	24.0	14.0	7.0
February	43.2	2.6	8.1	1.6	26.1	15.9	7.7
March	49.8	2.8	8.8	1.7	30.4	17.1	8.8
March quarter	138.2	8.2	26.2	5.1	80.6	47.0	23.6
ROOM OCCUPANCY RATES (%)							
2001							
March quarter	80.1	61.2	n.p.	n.p.	66.2	50.7	68.2
2002							
January	67.7	62.5	67.7	62.8	58.7	45.9	54.1
February	71.5	63.6	65.3	62.9	70.7	57.8	65.8
March	74.5	63.0	63.9	57.6	74.3	56.1	67.8
March quarter	71.2	63.0	65.7	61.0	67.8	53.1	62.5
GUEST NIGHTS ('000)							
2001							
March quarter	265.4	16.7	n.p.	n.p.	152.9	81.1	49.0
2002							
January	91.5	6.5	23.0	4.6	48.3	27.3	14.8
February	77.6	5.2	16.7	3.9	47.0	27.1	14.5
March	91.4	5.8	18.2	3.9	55.2	30.7	17.2
March quarter	260.5	17.5	57.9	12.4	150.5	85.2	46.4
GUEST ARRIVALS ('000)							
2001							
March quarter	110.2	13.5	n.p.	n.p.	86.9	51.3	31.6
2002							
January	35.0	4.9	14.4	3.1	26.3	15.6	9.1
February	31.4	4.1	11.9	2.5	26.6	16.4	8.6
March	37.1	4.5	12.9	2.5	30.3	18.9	11.1
March quarter	103.6	13.5	39.3	8.0	83.2	50.9	28.8
TAKINGS FROM ACCOMMODATION (\$'000)							
2001							
March quarter	15 913	680	n.p.	n.p.	7 600	4 474	2 185
2002							
January	4 868	262	993	153	2 247	1 490	610
February	4 447	218	817	133	2 436	1 535	619
March	5 225	246	868	126	2 743	1 663	725
March quarter	14 540	727	2 678	412	7 426	4 688	1 954

(a) Changes in the Statistical Local Areas making up these Tourism Regions have resulted in changes to previously published figures.

Period	Darwin	Kakadu	Arnhem	Katherine	Tablelands	Petermann	Alice Springs	MacDonnell	Daly	Canberra
ESTABLISHMENTS, CAPACITY AND EMPLOYMENT (number)										
March quarter 2001										
Establishments	34	4	3	10	7	7	22	2	1	59
Guest rooms	2 591	n.p.	n.p.	529	254	n.p.	1 618	n.p.	n.p.	5 004
Bed spaces	7 811	n.p.	n.p.	1 512	725	n.p.	4 859	n.p.	n.p.	14 817
Persons employed	1 347	n.p.	n.p.	184	55	n.p.	775	n.p.	n.p.	2 319
March quarter 2002										
Establishments	35	4	3	10	6	7	22	2	1	62
Guest rooms	2 634	n.p.	83	547	n.p.	n.p.	1 551	n.p.	n.p.	5 228
Bed spaces	7 727	n.p.	284	1 565	n.p.	n.p.	4 690	n.p.	n.p.	15 427
Persons employed	1 240	n.p.	56	175	n.p.	n.p.	768	n.p.	n.p.	2 387
ROOM NIGHTS OCCUPIED ('000)										
2001										
March quarter	104.8	n.p.	n.p.	14.5	5.7	n.p.	69.2	n.p.	n.p.	267.5
2002										
January	30.2	n.p.	0.5	4.2	n.p.	n.p.	18.7	n.p.	n.p.	95.4
February	35.9	n.p.	0.6	4.2	n.p.	n.p.	20.8	n.p.	n.p.	95.5
March	41.4	n.p.	0.7	4.5	n.p.	n.p.	24.9	n.p.	n.p.	102.5
March quarter	107.5	n.p.	1.7	12.9	n.p.	n.p.	64.4	n.p.	n.p.	293.3
ROOM OCCUPANCY RATES (%)										
2001										
March quarter	44.9	n.p.	n.p.	30.4	24.8	n.p.	47.5	n.p.	n.p.	59.4
2002										
January	37.0	n.p.	17.5	24.8	n.p.	n.p.	38.9	n.p.	n.p.	58.8
February	48.6	n.p.	24.5	27.7	n.p.	n.p.	47.9	n.p.	n.p.	65.2
March	50.7	n.p.	26.0	26.5	n.p.	n.p.	51.8	n.p.	n.p.	63.2
March quarter	45.3	n.p.	22.6	26.3	n.p.	n.p.	46.1	n.p.	n.p.	62.3
GUEST NIGHTS ('000)										
2001										
March quarter	165.4	n.p.	n.p.	26.8	10.6	n.p.	119.0	n.p.	n.p.	454.9
2002										
January	50.2	n.p.	0.8	8.1	n.p.	n.p.	32.3	n.p.	n.p.	190.5
February	52.6	n.p.	0.9	7.8	n.p.	n.p.	32.7	n.p.	n.p.	149.7
March	59.4	n.p.	1.1	8.7	n.p.	n.p.	40.6	n.p.	n.p.	166.2
March quarter	162.2	n.p.	2.8	24.6	n.p.	n.p.	105.6	n.p.	n.p.	506.4
GUEST ARRIVALS ('000)										
2001										
March quarter	73.2	n.p.	n.p.	21.1	7.6	n.p.	58.6	n.p.	n.p.	209.3
2002										
January	20.2	n.p.	0.3	5.7	n.p.	n.p.	16.4	n.p.	n.p.	73.1
February	22.4	n.p.	0.4	5.3	n.p.	n.p.	16.8	n.p.	n.p.	65.8
March	26.5	n.p.	0.5	6.1	n.p.	n.p.	20.7	n.p.	n.p.	72.3
March quarter	69.1	n.p.	1.2	17.1	n.p.	n.p.	53.8	n.p.	n.p.	211.2
TAKINGS FROM ACCOMMODATION (\$'000)										
2001										
March quarter	9 805	n.p.	n.p.	1 029	450	n.p.	5 823	n.p.	n.p.	30 611
2002										
January	2 834	n.p.	50	279	n.p.	n.p.	1 472	n.p.	n.p.	10 412
February	3 326	n.p.	65	284	n.p.	n.p.	1 661	n.p.	n.p.	10 375
March	3 702	n.p.	92	317	n.p.	n.p.	2 008	n.p.	n.p.	11 205
March quarter	9 862	n.p.	207	880	n.p.	n.p.	5 141	n.p.	n.p.	31 992

EXPLANATORY NOTES

INTRODUCTION

- 1** This publication contains data from the ABS quarterly Survey of Tourist Accommodation (STA). The STA is a mailout collection that completely enumerates all in-scope accommodation establishments.
- 2** From the March quarter 1998, the scope and collection strategy for the STA was changed to include only significant accommodation establishments (these are defined below).

SCOPE

- 3** On a quarterly basis, the STA includes hotels, resorts, motels, guest houses and serviced apartments with 15 or more rooms or units.
- 4** Every third year beginning with 2000, the STA expands to also include:
 - holiday flats, units and houses of letting entities with 15 or more rooms or units;
 - caravan parks with 40 or more powered sites;
 - visitor hostels with 25 or more bed spaces.
- 5** The short-term non-residential accommodation which is in scope of the STA is accommodation which is not leased, and which is provided to guests who would generally stay for periods of less than two months.
- 6** Some establishments also provide long-term residential accommodation. For hotels, motels, guest houses and serviced apartments, the amount of such activity is considered to be insignificant and is included in the data presented in this publication.

DEFINITIONS OF ACCOMMODATION ESTABLISHMENTS

- 7** The STA includes the following categories of establishments which provide predominantly short-term non-residential accommodation to the general public:
 - hotels and resorts with facilities - establishments with 15 or more rooms which are licensed to operate a public bar and which provide accommodation on a room/suite basis, with a bath/shower and toilet in most guest rooms, but which do not have full cooking facilities (i.e. hot plates and oven/microwave) in most guest rooms;
 - motels, private hotels and guest houses with facilities - establishments with 15 or more rooms which are not licensed to operate a public bar, and which provide accommodation on a room/suite basis, with a bath/shower and toilet in most guest rooms, but which do not have full cooking facilities (i.e. hot plates and oven/microwave) in most guest rooms;
 - serviced apartments - establishments with 15 or more units which mostly comprise self-contained units at the same location, and which are available on a unit/apartment basis to the general public for a minimum of one night; the units should have full cooking facilities (i.e. hot plates and oven/microwave), refrigerator and bath/shower and toilet facilities; all bed linen and towels should be provided, and daily servicing (i.e. cleaning and bed making) must be available through the on-site management, although this service need not necessarily be used.

EXPLANATORY NOTES *continued*

CLASSIFICATION CHANGES	<p>8 As a result of the separate classification of serviced apartments from the March quarter 1998, there have been several changes to definitions of accommodation units. Some units, which were formerly in categories such as hotels, motels or holiday flats, units and houses are now classified as serviced apartments. A small number of establishments which were previously classified as motels have been reclassified as holiday flats, units and houses and are therefore no longer in scope of the quarterly STA, except as described in paragraph 4.</p>
COVERAGE	<p>9 Coverage is comprehensive and from the September quarter 1999, is obtained from the Australian Automobile Association accommodation guide, supplied as an electronic file, which is updated twice yearly. This is supplemented by notification of new tourism developments and their likely opening dates in selected guides, major tourism journals and periodicals and newspapers. Periodic comparison with lists of accommodation establishments provided by the various Tourism Commissions and Industry Associations is also undertaken.</p>
DATA QUALITY	<p>10 The survey does not have a sample component and the data are not subject to sampling variability. However, other inaccuracies collectively referred to as non-sampling error may affect the data. These non-sampling errors may arise from a number of sources, including:</p> <ul style="list-style-type: none">■ errors in the reporting of data by respondents;■ errors in the process of capturing data;■ estimation for missing data; and■ definition and classification errors. <p>Every effort has been made to reduce non-sampling error to a minimum by careful design and testing of questionnaires, and efficient operating procedures and systems used to compile statistics.</p> <p>11 The March quarter 2002 response rates were:</p> <ul style="list-style-type: none">■ 92% licensed hotels■ 91% motels and guest houses■ 94% serviced apartments
TAKINGS FROM ACCOMMODATION	<p>12 From 1 July 2000, takings from accommodation include gross revenue from the provision of accommodation, including GST. Takings from meals are excluded. Where businesses are unable to provide the data inclusive of GST, it is automatically adjusted by the ABS prior to aggregation and release in output.</p>

EXPLANATORY NOTES *continued*

REGIONAL DATA

13 Survey results are aggregated to Tourism Regions as defined by relevant State and Territory Tourist Commissions or equivalent organisations. Tourism Regions are reviewed annually and are subject to boundary and name changes. Where changes have occurred care should be taken when making comparisons with previously published data at this level.

Details of the composition of Tourism Regions and major changes to Tourism Regions can be found in *Tourist Accommodation, Small Area Data* Standard Data Service products for each State/Territory (Cat. no. 8635.n.40.001) (issued quarterly). Outline maps of Tourism Regions are also provided in these Small Area Data products.

ANNUAL CAPACITY DATA

14 ABS releases counts of accommodation establishments and their capacity as at the end of December each year in respect of the pre-1998 scope of the survey (but recognising serviced apartments separately) as follows:

- hotels, motels and guest houses and serviced apartments with facilities and having five or more rooms;
- holiday flats, units and houses (other than those included with serviced apartments) which are operated by owners, managers or real estate agents who have sole letting rights to at least five flats, units or houses for short term letting;
- all caravan parks regardless of size; and
- all visitor hostels regardless of size.

15 As a result of classification changes applied from March quarter 1998 onward, data will not be comparable with that previously published for particular accommodation types.

16 These counts are published annually in a quarterly issue of *Tourism Indicators, Australia* (Cat. no. 8634.0).

STATISTICS AVAILABLE ON REQUEST

17 The ABS makes tourist accommodation data available on request, including statistics for past quarters, for specific areas and specific data items. For example, detailed employment statistics showing the number of full-time, part-time or casual employees may be available. Normally such data is made available on a fee for service basis.

RELATED PUBLICATIONS

18 Other ABS publications and products which may be of interest include:
Directory of Tourism Statistics, 2001 (Cat. no. 1130.0) (irregular)
Overseas Arrivals and Departures, Australia (Cat. no. 3401.0) (issued monthly)
Tourism Indicators, Australia (Cat. no. 8634.0) (issued quarterly)
Tourist Accommodation, Small Area Data Standard Data Service (SDS) products for each State/Territory (except the ACT) (Cat. no. 8635.n.40.001) (issued quarterly).

19 Current publications produced by the ABS are listed in the *Catalogue of Publications and Products* (Cat. no. 1101.0). The ABS also issues the *Release Advice* (Cat. no. 1105.0) on Tuesdays and Fridays which lists publications to be released in the next few days. Both are available from any ABS office or the ABS web site.

EFFECTS OF ROUNDING

20 Where figures have been rounded, discrepancies may occur between totals and the sum of the component items.

EXPLANATORY NOTES *continued*

TOURISM REGION CHANGES

21 From March quarter 2002 changes have been made to some Statistical Local Areas (SLA) and Tourism Regions (TR) in Queensland, South Australia and Tasmania.

The following Queensland Tourism Regions have had Statistical Local Area changes as a consequence of revisions to the *Australian Standard Geographical Classification (ASGC)* (Cat. no. 1216.0):

Bowen (S) SLA has moved from Northern (TR) to Whitsunday (TR)

In South Australia, Barossa Valley (TR) has been renamed to Barossa (TR)

In Tasmania the following Tourism Regions have had Statistical Local Area changes:

East Coast, Northern and Southern

Further details of the changes for Queensland and Tasmania respectively may be found in:

Tourist Accommodation, Small Area Data, Queensland (Cat. no. 8635.3.40.001)

Tourist Accommodation, Small Area Data, Tasmania (Cat. no. 8635.6.40.001)

GLOSSARY

Average length of stay	Average length of stay is expressed in numbers of days and calculated by dividing <i>Guest nights</i> by <i>Guest arrivals</i> .
Bed spaces	Three-quarter beds are counted as one bed space; double beds as two bed spaces. Cots are excluded.
Capacity	Capacity in terms of <i>Guest rooms/units</i> or <i>Bed spaces</i> is the maximum number available to accommodate paying guests during the survey period. Capacity closed temporarily for seasonal reasons is included.
Establishments	The number of hotels, motels and guest houses and serviced apartments within the scope of the survey which operated for any part of the survey period, or which closed temporarily for the quarter for seasonal reasons.
Guest arrivals	The total number of paying guests counted only on the first night they stayed at the accommodation establishment during the survey period.
Guest rooms	The maximum number of rooms available at each establishment during the survey period for accommodating short-term paying guests. Units and apartments within serviced apartments are treated as rooms in these survey results.
Occupancy	Occupancy in terms of <i>Room nights</i> refers to the total number of nights each guest room or unit was occupied during the survey period. Occupancy in terms of <i>Guest nights</i> refers to the total number of paying guests counted on each night they stayed at the accommodation establishment during the survey period.
Occupancy rates	<i>Occupancy rates</i> represent occupancy expressed as a percentage of total capacity available during the survey period, e.g. for the period $\text{Room occupancy rate (\%)} = \frac{\text{Room nights occupied}}{(\text{Guest rooms}) \times (\text{No. of days in the period})} \times 100$ providing that, for establishments closing (other than for seasonal reasons) or opening during the survey period, the denominator of the above expression includes only operating periods.
Persons employed	The total number of persons working at each accommodation establishment at the end of the survey period (including working proprietors and those working on other than accommodation activities).
Room nights available	The number of guest rooms/units available multiplied by the number of days for which they were available during the survey period. For establishments closing (other than for seasonal reasons) or opening during this period, operating periods only are included.

Star grading The grading of hotels, motels and guest houses with facilities and serviced apartments based on the classification system used by members of the Australian Automobile Association (AAA). The gradings are allocated according to a points system based on the amenities and facilities available to guests. Details of the grading scheme are contained in the RACV-RAASA members' publication *Accommodation Australia*, or the individual tour guides produced by members of the AAA. For the purpose of classifying establishments to a star grading in this publication, 'half' star gradings are ignored (e.g. a two and a half star grading has been shown as two star).

From the September quarter 1999, some (very few) large establishments not star graded by the AAA have been allocated a star grade by the ABS for Survey of Tourist Accommodation statistical tabulation purposes.

Takings from accommodation Since 1 July 2001, takings from accommodation include gross revenue from the provision of accommodation, including GST. Takings from meals are excluded. In cases where takings from accommodation data cannot be provided inclusive of GST the amount of GST payable is estimated and the data revised accordingly.

Prior to 1 July 2001, takings from accommodation for some jurisdictions included bed taxes. From 1 July bed taxes were abolished being replaced by GST. Takings from accommodation for each month generally represent the takings received during that month. Where payments are received in advance of, or after, the provision of accommodation to guests, the monthly figure for takings from accommodation may not necessarily bear a direct relationship to the number of guests accommodated during the month.

FOR MORE INFORMATION...

- INTERNET* **www.abs.gov.au** the ABS web site is the best place to start for access to summary data from our latest publications, information about the ABS, advice about upcoming releases, our catalogue, and Australia Now—a statistical profile.
- LIBRARY* A range of ABS publications is available from public and tertiary libraries Australia-wide. Contact your nearest library to determine whether it has the ABS statistics you require, or visit our web site for a list of libraries.
- CPI INFOLINE* For current and historical Consumer Price Index data, call 1902 981 074 (call cost 77c per minute).
- DIAL-A-STATISTIC* For the latest figures for National Accounts, Balance of Payments, Labour Force, Average Weekly Earnings, Estimated Resident Population and the Consumer Price Index call 1900 986 400 (call cost 77c per minute).

INFORMATION SERVICE

Data which have been published and can be provided within five minutes are free of charge. Our information consultants can also help you to access the full range of ABS information—ABS user-pays services can be tailored to your needs, time frame and budget. Publications may be purchased. Specialists are on hand to help you with analytical or methodological advice.

- PHONE* **1300 135 070**
- EMAIL* **client.services@abs.gov.au**
- FAX* 1300 135 211
- POST* Client Services, ABS, GPO Box 796, Sydney 1041

WHY NOT SUBSCRIBE?

ABS subscription services provide regular, convenient and prompt deliveries of ABS publications and products as they are released. Email delivery of monthly and quarterly publications is available.

- PHONE* 1300 366 323
- EMAIL* subscriptions@abs.gov.au
- FAX* 03 9615 7848
- POST* Subscription Services, ABS, GPO Box 2796Y, Melbourne 3001



2863500003029
ISSN 1031-0770

RRP \$22.00